



TIMBER TALK

Your Voice for South Carolina Timber Harvesting

1ST QUARTER 2022

2022 SCTPA ANNUAL MEETING WAS A SUCCESS!

By Crad Jaynes, President

First and foremost, Thanks to Everyone ... sponsors, exhibitors, speakers, board members, members and guests ... for attending our 2022 annual meeting at the DoubleTree Resort by Hilton Myrtle Beach Oceanfront held on February 25 -26.

Attendance was greater than we had anticipated (because of the lingering effects of the Covid pandemic) as over 315 people came for a great meeting to hear informative speakers and simply be able to get back out and fellowship with friends, family and industry peers. Our meeting was a success because of the support and turnout of everyone.

Thanks to our twenty-eight sponsors and twenty-seven exhibitors for participating in our annual meeting. There were also several exhibitors who brought trucks and trailers for the outside parking lot.

Friday kicked off with the board of directors meeting with several guests in attendance. We reviewed the annual meeting, looked at the 2021 financials, received updates on state and federal legislative issues and other current issues impacting SC's timber harvesting, wood supply and timber trucking segments.

Friday evening's Welcome Reception was well attended and highlighted

by a Live Auction. Four items were auctioned ... a Husqvarna 395XP Chainsaw with 32-Inch Bar, won by Bill Lominick; Stihl Extendable Pole Saw, won by John Smith, Jr.; Handmade Cedar Swing, won by Bob and Cindy Lussier; and, Handmade Coffee Table, won by Greg Hutson. Thanks to our donors, Husqvarna of Charlotte, SCTPA, Brandon Poteat and Josh Key of Beech Island Timber and Mike Sox of Fellowship Tables and Custom Wood Products. The live auction was a fun time and raised \$7,900 for the association. DJ Mike Lockaby provided a fun evening of music

for dancing and karaoke.

Saturday's General Session was filled with informative speakers. SC State Forester led off with an update about SC's forest resources, logging, forestry and economic development. Ewell Smith of TimberHauling.com presented this new online approach to help loggers save money on services and products. Derek Breedlove of Vestige highlighted how important onboard cameras and GPS systems are to enhancing truck fleet safety as well as how onboard cameras can potentially help avoid a truck accident lawsuit. Stephen Setliff, a well know defense attorney of The Setliff Law Firm,

(Continued on page 2)



Inside ...

2022 SCTPA Annual Meeting	Cover
SC Introduces Card for Agricultural Sales Tax Exemption	3
ALC Seeks Additional PATHH Funding	4
New Card Aims to Simplify Purchasing Process for Farmers	5
Brazil Cracks Down on Illegal Logging	5
FRA Receives Forest service Chief's Award	6
GP Announces New Project	6
2021 Gene Collins Activist Award	8
2020 Gene Collins Activist Award	11
Welcome New Members	13
SC Logging Business Surveys	15
West Fraser Buys OSB Mill	18
SC Hands-Free Act	19
Surging Fuel Prices!	20
PATHH Program Funding Request	26
TimberHauling.com Shows Loggers How to Save	33
McMorris Rodgers, Westerman Lead Legislation Bannina Timber Imports from Russia	34
Safety Alert	35
Annual Meeting Photos	36-37
Mark Your Calendar	39
2022 SCTPA Board of Directors	39



(Continued from page 1)

discussed the legal environment regarding truck accidents and the predatory attorneys. Bob Lussier, President of Team Safe Trucking (TST), discussed the activities of Team Safe Trucking and how TST is assisting the forestry transportation sector with its online driver training programs.

Saturday's luncheon featured SC Agriculture Commissioner Hugh Weathers, American Loggers Council Executive Director Scott Dane, and Rick Quagliaroli from Forestry Insurance Company of the Southeast as our featured speakers.

In the association business session, SCTPA President Crad Jaynes provided a President's report highlighting association activities. Larry Godwin of Sheheen, Hancock & Godwin reviewed the 2020 and 2021 association financials. Secretary-Treasurer Robby Crowder presented the bylaws report and an amendment to the association bylaws. The amendment was approved by the membership. Two board members, Rickey Chapman and Robby Crowder, did not running for re-election and were presented their SCTPA Board of Directors Service plaques for their eight years of board service. Four board seats were up for election, two for new board members and two for re-election. Congratulations to Bo Bo Seckinger, Seckinger Forest Products, Inc., and Bob Lussier, Great Woods Companies, LLC, who were re-elected to another four year term. Congratulations to Colby Crosby, Crosby Logging and Timber, Inc., and Griff Wilson, WilRidge Forestry, LLC as newly elected to serve four year terms.

Greg Hutson of Forestry Mutual Insurance Company presented their MVP Award to Kendra McKittrick of McKittrick Timber, LLC for her important work in their business.

Since there was no 2021 annual meeting, two Logger Activist Awards were presented. Jack Gaston, Jr., Gaston Logging, LLC was presented the 2020 SCTPA Logger Activist Award, and Darin Crosby of Crosby Logging & Timber, Inc. was presented the 2021 SCTPA Logger Activist Award. Congratulations to both of these professional loggers.

Next the drawings for the \$400 Gift Certificate to Ole Edgefield Butcher Shop, the Henry Big Boy XMOD 44 Magnum Rifle and the Tri-Star Viper G2 20 Gauge Shotgun were held. Congratulations to our winners, and special thanks to all for purchasing drawing tickets.



Scott Dane (r) and Hugh Weathers (l) enjoying an after lunch discussion.

Saturday afternoon the SFI Trained Update DVD was presented by SC Forestry BMP Foresters Eric West and Andrew Williams. This workshop allowed folks to receive their 2022 SFI Trained Status.

Sunday morning concluded the annual meeting with our traditional Sunday Prayer Breakfast. Special thanks to port City Quartet for providing inspirational and faithful gospel music along with their testimonies to The Lord. After the Prayer Breakfast the Silent Auction winners were announced and meeting was adjourned.

Special thanks goes out to my family for their help at our annual meeting. The meeting couldn't be a success without these people. Thanks to my

wife Brenda, sister-in-law Dee Peake, Dee's cousin Mary Rawl, our daughter Erin Jaynes Belk and SCTPA Communications Director Kathy Fudge and her husband John for all your help. Great Job!

Mark your calendar now for our 2023 Annual meeting to be February 24 – 26 at the DoubleTree Resort by Hilton Myrtle Beach Oceanfront.

To say the 2022 annual meeting was a success is an understatement. It was a **Great Annual Meeting**. Again, THANKS to everyone for supporting, contributing and attending our 2022 annual meeting.

Log On & Truck Safe!



More "success" photos can be found on pages 36-37



South Carolina DEPARTMENT OF AGRICULTURE

Hugh E. Weathers, Commissioner

Media Contact: Eva Moore, 803-734-2196, emoore@scda.sc.gov

FOR IMMEDIATE RELEASE – February 1, 2022

South Carolina Introduces Card for Agricultural Sales Tax Exemptions

COLUMBIA – The South Carolina Department of Agriculture and the South Carolina Department of Revenue are pleased to announce the South Carolina Agricultural Tax Exemption (SCATE) card, a handy way for farmers to show they are eligible for certain state Sales Tax exemptions.

For many years, farmers have had to fill out a paper form, the ST-8F, to receive Sales Tax exemptions for items used in agricultural production. But after April 1, 2022, farmers will instead show their plastic SCATE card or key fob when making an exempt purchase.

“Farmers have asked us to modernize the sales tax exemption process, and the new SCATE card we’ve developed will do just that,” said Commissioner of Agriculture Hugh Weathers. “I’d like to thank Senate Finance Chairman Harvey Peeler for his support of this new endeavor.”

“We’re excited to assist the Department of Agriculture with this improvement, which makes the exemption process easier for both farmers and retailers,” said Department of Revenue Director Hartley Powell.

State law is not changing. Farmers will still be able to receive the same exemptions as before.

Farmers can apply for their SCATE card now at scatecard.com. Applicants will need a tax ID number (either a Social Security Number or Federal Employer Identification Number), a valid email address, and a credit card or checking account number to pay the \$24 fee for the card. Cards expire three years from the date of issue.

After April 1, 2022, retailers should no longer accept the old paper form. SCDOR requires that retailers maintain evidence of exempt sales, including the SCATE card number, and report exempt sales on the Sales & Use Tax return.

Visit scatecard.com to apply for a card, verify a card number, or read the FAQ, including the full list of tax exemptions. You may also email scate@scda.sc.gov or call 803-734-2210.

###

1200 Senate Street • Columbia, SC 29201
Wade Hampton Building, 5th Floor
PO Box 11280 • Columbia, SC 29211

AGRICULTURE.SC.GOV
803-734-2210
FAX 803-734-2192



ALC Seeks Additional PATHH Funding

The need and success of the Pandemic Assistance for Timber Harvesters and Haulers (PATHH) was demonstrated by more than 5,600 applications representing eligibility for \$385 million in aid, according to American Loggers Council. Unfortunately, this figure is nearly double the \$200 million appropriated for the program.

As a result, the Farm Service Agency had to implement an assistance formula modification which resulted in reduced financial assistance ranging from 10%-57% compared to initial estimates. This adjustment was a necessary action to ensure that all eligible applicants received some level of assistance.

American Loggers Council anticipated this might be the case based on multiple economic impact studies conducted by ALC and the U.S. Forest Service, which indicated that COVID-19 induced negative economic impact to the timber industry exceeding \$1 billion.

Upon this final determination the ALC traveled to Washington, DC and met with key Congressional Appropriations Committee members and expressed a need for supplemental funding to ensure full assistance is provided to the timber industry as originally intended. This information and message was also conveyed to the White House.

ALC Executive Director Scott Dane, in a letter to Congress, while noting the success of PATHH, also pointed out that due to the adjustments "in many cases the amount of financial assistance was reduced to less than half of what the applicant would have been eligible for. As an example, an applicant that would have been eligible, based on their gross income loss multiplied by 80% (original formula), for \$180,000 would have been limited to the maximum of \$125,000."

Dane noted that the new formula, due to the excess request for assistance, limits the maximum to \$75,000 and then applies a multiplier of 70.5% to that figure resulting in a maximum limit of \$52,875. This is 42% of the original formula assistance level. Additionally, where the original assistance formula would have provided for 80% of the gross revenue loss, the new formula only provides 70.5% of the gross revenue loss.

"This level of need is evidence of the economic impact that the COVID-19 pandemic has had on the American timber industry," Dane stated. "Multiple economic analysis reports indicated that the economic loss exceeded \$1 billion. Now that the real economic need has been verified, and to meet the intent of Congress in providing adequate assistance to this vital industrial sector, a supplemental appropriation of \$185 million (as per Farm Service Agency data) needs to be appropriated."

Dane pointed out that additional supplemental appropriations have been provided for other disaster and assistance programs when the demand exceeded the initial funding appropriation.

"The American Loggers Council, and the timber industry that we represent, is extremely appreciative of the PATHH program assistance. The program's success has exceeded expectations and has received bipartisan support in both the Senate and House, as well as Administration support. Unfortunately, the success of the program has also revealed the extent of economic impact, loss and need within the timber industry sector. Therefore, the American Loggers Council respectfully requests an additional supplemental appropriation of \$185 million."





NEW CARD AIMS TO SIMPLIFY PURCHASING PROCESS FOR FARMERS

By Melinda Waldrop / Columbia Regional Business Report / Feb 01, 2022

S.C. farmers have a new way to show eligibility for certain sales tax exemptions. The South Carolina Agricultural Tax Exemption (SCATE) card will replace a paper form, the ST-8F, that farmers have had to fill out to receive sales tax exemptions for items used in agricultural production.

After April 1, retailers will no longer accept the paper form, according to a news release from the S.C. Department of Agriculture. Purchasers will instead show the plastic SCATE card or key fob when making exempt purchases, which will remain the same.

"Farmers have asked us to modernize the sales tax exemption process, and the new SCATE card we've developed will do just that," S.C. Commissioner of Agriculture Hugh Weathers said in the release. "I'd like to thank Senate Finance Chairman Harvey Peeler for his support of this new endeavor."

SCATE card applications are available at scatecard.com. Applications will need a tax ID number, a valid email address, and a credit card or checking account number to pay the \$24 card fee. Cards expire three years from the date of issues.

"We're excited to assist the Department of Agriculture with this improvement, which makes the exemption process easier for both farmers and retailers," said S.C. Department of Revenue Director Hartley Powell.

SCDOR requires that retailers maintain evidence of exempt sales, including the SCATE card number, and report exempt sales.

For more information, including the full list of tax exemptions, email scate@scda.sc.gov or call 803-734-2210.



SCTPA Comments: The SCATE card applies to Loggers for purchasing Off Road Fuel and Logging Equipment Replacement Parts.

BRAZIL CRACKS DOWN ON ILLEGAL LOGGING

Brazilian officials in late December shut down scams involving hundreds of companies allegedly covering up illegal logging in the Amazon rainforest. Agents claim more than 200 companies and 21 logging companies were involved in various schemes disguising the origin of illegal wood, according to news reports.

In Brazil, forestry officials hand out a limited number of concessions that allow only a proportion of trees to be cut in a specific area, and sets quotas capping the harvest. Quotas are given out as credits that then accompany the wood as it is sold and resold, certifying its legal origins until it is made into a "finished

product" like furniture or flooring.

Brazilian agents say companies were selling the credits without the wood. Buyers would then attach the woodless credits to illegally sourced wood with origins such as protected nature reserves or tribal lands.

Officials say the enforcement action is significant since it showed how illegally cut Amazon wood is inserted into legal timber supply chains, using shell companies and faking shipments, and it also revealed many of the people hiding behind or doing business with the shell companies.

FRA Receives Forest Service Chief's Award

January 13, 2022--Today, FRA President Deb Hawkinson, on behalf of the Forest Resources Association (FRA), received the USDA Forest Service Chief's Award for the association's work in securing funding for and the development of the Pandemic Assistance for Timber Harvesters and Haulers (PATHH) program. The program provided \$200 million in financial assistance to timber harvesting and hauling operations that were financially harmed by the pandemic.

FRA worked extensively with the Trump and Biden administrations, elected officials, and the USDA to secure funding and the development of a program that provided financial relief to logging businesses that could demonstrate financial losses from the pandemic. "The PATHH program provided much-needed financial relief to logging businesses of which many are small family operations that pass generation to generation," said Hawkinson. "We want to thank the many allies that collaborated to achieve the success of this program that provided much need financial assistance to more than 5,000 businesses". These partners include the USDA Forest Service, Farm Service Agency, American Loggers Council, and National Association of State Foresters.

The Forest Service Chief's Award recognizes partnerships that sustain national forests and grasslands.

###

The Forest Resources Association (FRA) represents the interests of over 330 organizations and businesses in the forest products industry. Members include forest landowners, suppliers, consuming mills, associated businesses, and state forestry associations. FRA has member representation in 49 states and 377 Congressional Districts.



GP Announces Multi-Million Dollar Project at Clarendon OSB

Georgia-Pacific recently announced a \$20 million addition to its oriented strand board (OSB) facility in Alcolu, South Carolina. The major scope of the project will be to add a third strander to the behemoth facility, which will increase the annual output of OSB products by approximately 150MMSF. Construction on the project is slated to begin in April, and the new addition is scheduled to come on-line in the first quarter of 2023.

"The addition of a third strander has always been in the plans for Clarendon," says Tobey Elgin, Georgia-Pacific's Director of Operations for OSB. "The site was originally designed for additional capacity, so adding this third strander will maximize the efficiency and

output for the operation."

A strander is on the green-end of the facility, or where the logs enter the process. Once the logs are debarked, they go into the strander, which processes the wooden flakes used in the OSB process.

Purchased from Grant Forest Products in 2010, Georgia-Pacific completed the construction, and the site began operations in 2013.

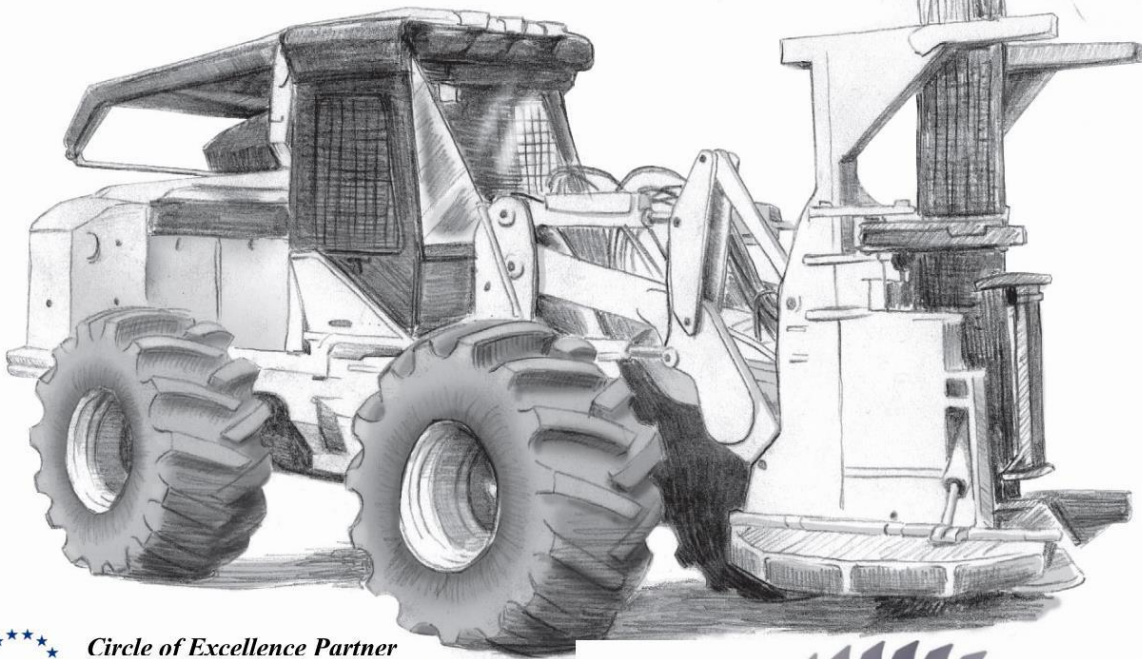
Approximately 100 contractors are expected during the construction phase. Once the new strander is on-line there is an expected increase in log demand.



PALMETTO STATE INSURANCE AGENCY, LLC

- Workers Compensation
- General Liability
- Business Auto
- Equipment
- Property
- Umbrella
- "Distressed Auto"
- And more...

Programs for:
Logging, Trucking, Foresters, Sawmills,
Construction, Farms & Agribusiness



Circle of Excellence Partner
BITCO INSURANCE COMPANIES

BEST COVERAGE IN THE WOODS
803-785-7742

P.O. Box 967, 141 Charter Oak Rd.
Lexington, SC 29071 www.PSIAgency.com



2021 GENE COLLINS ACTIVIST AWARD

Darin Crosby Crosby Logging & Timber, LLC Ridgeland, SC

The 2021 Gene Collins Logger Activist Award is proudly awarded to Darin Crosby and Crosby Logging & Timber, Inc. for their sincere commitment to professional timber harvesting, loyally supporting the association, participating in community and industry activities, practicing sustainable timber harvesting, promoting education and positive promotion of professional business practices.

Crosby Logging & Timber, Inc. is a conscientious, professional business understanding the value of relationships with customers, employees and their industry, environmental stewardship and promotion of a positive image as a professional logger.

Crosby Logging & Timber is truly a family business. Darin's two sons, Colby and Dylan, wife Lori and daughter Shelby work in the business. Lori and Shelby are the business administrators and run the office.

Darin and Crosby Logging & Timber have been a loyal SC Timber Producers Association Logger Member since the association started in 1999. In fact, Darin has always

paid his dues on time and has been gracious enough to pay more than what was required. Thanks Darin.



Darin began working with his father harvesting pine stumps for Hercules, Inc. Then in 1993, he started his logging business with one crew. Then in 2020, he started a second crew. Colby runs one crew and Dylan runs the other crew. All three, Darin, Colby and Dylan are SC Sustainable Forestry Initiative Logger Trained.

The equipment spread for the company consist of three Tigercat 234B knuckleboom loaders mounted on trailers and equipped with pull through delimbers with one loader used as a spare. Felling and bunching is done with a Tigercat 720-E, a John Deere 643 and a Tigercat 822 track feller buncher. Skidders used are two John Deere 748 grapple skidders and a John Deere 648 grapple skidder. They have two bulldozers, a CAT-D5 and a

John Deere 700-L. Two service trucks are available, one for each crew.

The company fleet consist of eight Kenworths, one International, ten log trailers and two lowboys. All the haul trucks are equipped with Vulcan Onboard Scales.

The company employs nine in woods employees, Lori and Shelby in

the office and seven company full time truck drivers. One contract trucker is used to haul timber.

Crosby Logging is a productive operation performing thinnings and total harvests. The two crews average weekly production is thirty to thirty-five loads per day. The company purchases 100% of their in woods stumpage. Their pulpwood and sawlog markets are Canfor in Estill, International Paper in Savannah and Port Wentworth in Georgia, Interfor in Meldrim, Georgia, Collum's Lumber Products in Allendale and WestRock in Hampton.

Darin and his family are active in community service. Darin is a deacon at Ridgeland Baptist Church and served on the local school board for many years. They sponsored recreational baseball teams for the Jasper-Ridgeland Youth Baseball League. Darin coached both sons in baseball while they were growing up. Crosby Logging and Timber is an avid supporter of and contributes to Log A Load For Kids.

Darin is a sponsor for the Justin Baker 5K Memorial Walk held in Ridgeland annually. Justin Baker was a very close friend of son Colby and unfortunately passed away at a very young age due to heart issues.

(Continued on page 9)



22 years later ...



Pictured (left to right): Colby Crosby, Kayla Crosby, Darin Crosby, Avery Crosby, Livi Crosby, Lori Crosby, Zane Crosby, Dylan Crosby, Lindsey Crosby, Shelby C. Etheridge & Brodie Etheridge

(Continued from page 8)

When Darin's sons were on the high school football team, he didn't like the fact the players all had different team shirts. So what did Darin do? He sponsored the team to have matching shirts, not jerseys just nice shirts to identify the players, for the football team. Now that is community involvement.

Crosby Logging & Timber has attended the association district meetings held in the area. They also participate in other local activities benefitting local charities.

Darin says, "I am glad and proud to be a SC Timber Producers Association logger member for all these years. I realize the importance of what the association does and brings to our industry's segment. I tell people about the importance of having SC Timber Producers Association and tell them, the other loggers in our area who may not be members, the association is there for me, you and our industry as professional loggers. The association is present and working for me as a professional logger as I attend to my daily job in the woods and running my business to provide the timber to wood receiving markets to produce the products that enhance our daily lives."

Darin goes on to state, "Take for instance down here where we work and live, like Beaufort and Jasper County, there are so many people coming to this area that are not from here, and don't know about professional timber harvesting and sustainable forestry practices. They as outsiders want to change things and even stop timber harvesting and make the area like a preserve. They just don't have any clue about what we as professional loggers do to promote and adhere to sustainable forestry and professional timber harvesting practices."

Darin says, "You got to love this business and embrace the challenges that go along with it. There are certain things I love to do in my business to help forest landowners. One is to conduct forest thinnings on properties for quail hunting. With the many quail plantations in this area where we work in the low country, we kind of have a niche because we pride ourselves in doing a great job. I like the challenges of this type of timber harvesting and enjoy that particular niche. I want to do a great job and because we do a great job, we get so many referrals that sometimes we can't keep up with the requests. I can tell you, Crosby Logging and Timber will take care of your property and do the right job for the forest landowner. I and my company take and have a great deal of pride in the work we do."

SCTPA's President Crad Jaynes says, "I have had the privilege to know Darin for over 25 plus years and I can say, he, his family and business are an outstanding example of professional logging. Thanks Darin ... I am proud of you as a professional logger and for your exemplary business."

Understanding the responsibilities and importance associated with how professional loggers contribute to their local and state economies, how professional loggers

must work with landowners, wood suppliers and wood receiving companies in cooperative, mutually beneficial partnerships, promoting and practicing sustainable forestry, educating the critical public regarding professional timber harvesting, demonstrating a stewardship attitude about our sustainable and renewable forest resources and our environment are all important issues to Gaston Logging, LLC's business and operational standards.

As an industry leader with a sincere commitment to professional logging, sustainable forestry, community, family and the principles of outstanding business, SCTPA is proud Crosby Logging and Timber, Inc. is our 2021 Gene Collins Logger Activist Award recipient.

The South Carolina Timber Producers Association's Logger Activist Award recognizes a logger member who has demonstrated an exceptional desire to promote and represent the profession by actively participating in association state and district activities, promoting and participating in educational efforts, community action projects and association projects to positively promote timber harvesting's image, conducting business activities in the best interests of the timber harvesting profession to engender the public's trust by meeting and exceeding the American Loggers Council Loggers Code of Practices and has displayed a professional commitment to sustainable forestry practices.

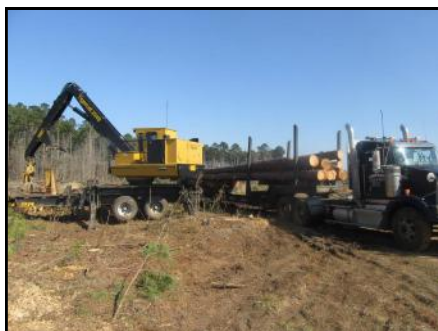
SCTPA's Logger Activist Award was named in honor of Gene Collins of Gene Collins Logging, Inc, Georgetown, because of Gene's dedication to his profession, his unselfish endeavors to promote the integrity of the logging industry within his community, his volunteer work educating children, his use of business practices that engendered the public's trust and his support for professional timber harvesting and sustainable forestry.



Darin Crosby

Crosby Logging & Timber, LLC

Ridgeland, SC



2020 GENE COLLINS ACTIVIST AWARD

JACK GASTON, JR. GASTON LOGGING, LLC *Lockhart, SC*

"You don't have to be big to be great." That statement fits perfectly with Gaston Logging, LLC.

The 2020 Gene Collins Logger Activist Award is proudly awarded to Jack Gaston and Gaston Logging, LLC for their sincere commitment to professional timber harvesting, loyally supporting the association, participating in community and industry activities, practicing sustainable timber harvesting, promoting education and positive promotion of professional business practices.

Gaston Logging, LLC is a conscientious, professional business understanding the value of relationships with customers, employees and their industry, environmental stewardship and promotion of a positive image as a professional logger.

Gaston Logging is a generational business. Jack's grandfather Carl Gaston started the business in 1920. Then in 1954 his father Jack Gaston, Sr. took over and ran the business until 1976 when Jack Gaston, Jr. took the helm. Now Jack's son Brian works with his father and is the fourth generation of Gaston Logging. Brian will take the reins when Jack retires. Jack says that when Brian takes over, his wife Janet and two daughters, Isabella (7) and Madelyn (4) will take on duties for the company.

Gaston Logging is a highly efficient and productive crew of five employees. Jack, Brian, Wallace Harris, Wayne Harris and Adali Durham make up Gaston Logging. Jack is the feller buncher operator, Brian runs the loader and deck, Wallace operates the grapple skidder and Wayne and Adali are truck drivers. Both Jack and Brian are SC Sustainable Forestry Initiative Trained.

The equipment spread consist of a John Deere 750 bulldozer, Tigercat 720 feller buncher, Tigercat 620 grapple skidder and Tigercat 250 trailer mounted loader with pull through delimber. The truck fleet is three Mack trucks, or will be three when a new Mack is added in

2022, two Pitts and two Evans double deck log trailers. Company has a service truck for the job.

Gaston Logging is not a high production operation, but

a very productive operation hauling 45 to 50 loads weekly. Pine pulpwood and sawlogs go to New Indy Containerboard, West Frazier, Boise Cascade, International Paper, Norbord South Carolina and hardwood logs go to Beal Lumber Company.

Jack purchases fifty percent of his stumpage and works with Butch Green and Foothills Forest Products, Inc. in Whitmire for the other timber stumpage.

Jack says it is a pleasure to partner with Foothills Forest Products.

Jack says, "Brian is my right hand man. He'll be very capable to take over the business when his time comes." Jack's wife Elaine is the office administrator and Jack says she is the backbone of Gaston Logging.

Gaston Logging is active in community service. They have been sponsoring Little League teams for thirty years. They also are active in their town of Lockhart by being a sponsor of events such as the Christmas Festival of Lights and Summer Festival. They attend the Lockhart Church of God and Elaine is the pianist and a singer and as Jack says, she can really sing. Beautiful voice! Gaston Logging supports Log A Load for Kids and other charitable organizations.

Jack says, "To be successful in the logging business, you need three things. The Lord, your family supporting you and your employees backing you. It's not about Jack, it's the three things you need to have."

In 2019, Gaston Logging received Forestry Mutual Insurance Company's E. K. Pittman South Carolina Logger of the Year Award for outstanding safety, operational and business performance.

Gaston Logging has now been a loyal SCTPA logger

(Continued on page 12)



(Continued from page 11)

member for 22 years since the association started. Jack communicates with the association's president regarding issues impacting his business and logging. Jack says, "I'm proud to be a professional logger and proud of our company. Our industry has changed over the years and presented many more challenges. But we've been able to adapt and meet the challenges that come our way. We're not a big logging business, just a safe, productive, efficient business believing that doing the job right, is the only way to operate. We all love what we do in our business."

Jack said, "I want to say for myself and all SC loggers, I greatly appreciate Crad Jaynes and the association for supporting, representing and servicing SC's logging industry. When I need help or have questions, he's always available and helps us."

SCTPA's President Crad Jaynes says, "I have had the privilege to know Jack Gaston for over 40 years of my career. Jack has always been one of the best professional loggers I have known. His performance on the ground and in his business has been and is today exceptional and his contributions to our professional logging industry are meaningful to promote and improve our timber harvesting industry."

There's one thing Jack pointed out as the most important thing on his job. That important item is a picnic table. Jack and the four team members eat lunch together every day. He says they talk about issues and can get issues fixed. And the picnic table moves to every job site. Unique approach to team bonding in the woods. As Jack said, "My family, my Lord and my business is my life."

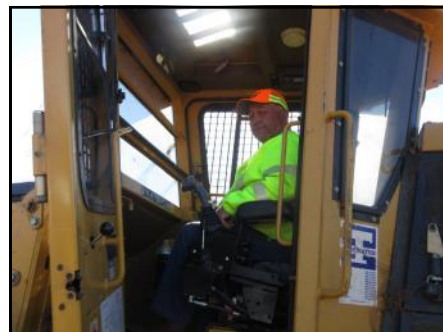
Understanding the responsibilities and importance associated with how professional loggers contribute to their local and state economies, how professional loggers must work with landowners, wood suppliers and wood receiving companies in cooperative, mutually beneficial partnerships, promoting and practicing sustainable forestry, educating the critical public regarding professional timber harvesting, demonstrating a stewardship attitude about our sustainable and renewable forest resources and our environment are all important issues to Gaston Logging, LLC's business and operational standards.

As an industry leader with a sincere commitment to professional logging, sustainable forestry, community, family and the principles of outstanding business, SCTPA is proud *Gaston Logging, LLC* is our *2020 Gene Collins Logger Activist Award* recipient.

The South Carolina Timber Producers Association's Logger Activist Award recognizes a logger member who has demonstrated an exceptional desire to promote and represent the profession by actively participating in association state and district activities, promoting and partici-

pating in educational efforts, community action projects and association projects to positively promote timber harvesting's image, conducting business activities in the best interests of the timber harvesting profession to engender the public's trust by meeting and exceeding the American Loggers Council Loggers Code of Practices and has displayed a professional commitment to sustainable forestry practices.

SCTPA's Logger Activist Award was named in honor of Gene Collins of Gene Collins Logging, Inc, Georgetown, because of Gene's dedication to his profession, his unselfish endeavors to promote the integrity of the logging industry within his community, his volunteer work educating children, his use of business practices that engendered the public's trust and his support for professional timber harvesting and sustainable forestry.



JACK GASTON, JR. GASTON LOGGING, LLC

Lockhart, SC



WELCOME NEW MEMBERS

SCTPA welcomes our New Members & Restart Members.
Your support is appreciated.

LONG CANE LOGGING, INC., *Hodges*

SHANNON, LLC, *Camden*

SOUTHERN TIMBER, INC., *Salley*

ENDEAVOR FOREST GROUP, LLC, *Prosperity*

COMER LOGGING, LLC, *Sharon*

HICKS LOGGING, LLC, *Florence*

HAMMOND LAND CLEARING, LLC, *Lancaster*

WALL TIMBER COMPANY, LLC, *Fairfax*

BLAZE TRANSPORT, LLC, *Blythewood*

BARFIELD TIMBER, LLC, *Union*

JOHNSON LOGGING, LLC, *Hickory Grove*

CRIBB'S WELDING, *Andrews*

SPS INSURANCE, *Atlanta*

MICHAEL STRANGE, *Greer*

VULCAN & S1 ONBOARD SCALES, *Kent, WA*

BROWN & BROWN OF SC, *Columbia*

*Dedicated representation & service to the professional timber harvesting segment of
South Carolina's forest products industry.*





Timber Talk

*Your Voice for South Carolina
Timber Harvesting*

Contact Crad Jaynes at
1-800-371-2240 or bcjpaw@windstream.net



Interstate South Carolina
TIRE SERVICE 888-641-6058



K516 Model,
11R22.5 30/32nds - \$280 Ea*
K516 Model,
11R24.5 30/32nds - \$310 Ea*

All Tires Are  Smart Way Approved

ah13rn



ag57dh



K216 Model
295/75R22.5 • 19/32nds

 All Tires Are
Smart Way Approved
\$275 Each*

*While Supplies Last

SC Logging Business Surveys



Researchers from Clemson University in partnership with the University of Georgia in Athens will be conducting a logging business survey in South Carolina. This survey is based on the original logging business survey's started in Georgia in the 1980's and conducted every 5 years. For the past 10 years South Carolina has been included in the logging business surveys and this year marks the fifth year since the 2017 logging business survey.

Dr. Patrick Hiesl and his graduate student Shubhechchha (*pronounced "shu-be-cha"*) Khadka will be sending out mail surveys starting in March of 2022. The survey will be one legal-sized page with questions on the front and back. They will send a follow up survey to non-respondents in April and will then stop asking for input.

The researchers at Clemson University will also be conducting in-person interviews of minority-owned (including veterans), young, and beginning (less than 10 years in business) logging business owners to learn about the challenges that this group of loggers is facing.

A second in-person interview will be conducted focusing on the succession plans (or lack thereof) of logging business owners that are within 10 years of expected retirement.

For all surveys, the researchers aim to get a better understanding of challenges and opportunities to keep the logging industry going and to hear your voice so that it can be reported and documented. The project is funded by a grant from the US Department of Agriculture and summarized responses from these

surveys will be reported back to the funding agency. If you are interested in participating in one of the two in-person interviews to have your voice heard and shed some light on the challenges that you have faced, please consider reaching out to Dr. Patrick Hiesl at phiesl@clemson.edu or (o) 864-656-7293 or (c) 518-637-9650. He and his student will be happy to schedule a meeting time with you at your business office, a logging site, or any other convenient location for you.

Please also consider filling out the mail survey. While it will take about 20 minutes of your time, the answers that you provide will greatly help to provide an overview of the state of logging businesses in South Carolina and help to document long-term trends.

As president of SC Timber Producers Association, I Crad Jaynes, and for our association, offer our full support to the research conducted by Clemson University, Dr. Patrick Hiesl, and his graduate student Shubhechchha Khadka and encourage you to participate in one or more of their studies.

This research and survey findings are valuable for the information to assist our timber harvesting industry. I understand folks don't like to do surveys, but I encourage our industry to participate in this important research project.

Log On & Truck Safe!



We Specialize in:
Trailers - New & Used
Service Department
Parts - We Ship Anywhere



Locations in:
Wilmington, NC
Spartanburg, SC
St. George, SC

www.pinnacletrailers.com

Inventory Arriving Daily!

Call Today 800-513-9373

New location in St George, SC -near Charleston !



**WE WERE LOGGERS FIRST.
SO WE PUT LOGGERS FIRST.**

We are a **PROUD SUPPORTER** and **ALLIED SUPPLIER** of the **SCTPA**. Trusted for over 45 Years, We started with one mission. A commitment to keep logger's operations running strong by providing quality used logging equipment and parts at **FAIR PRICES**. Nothing has changed since **DAY ONE**.

STAY UP TO DATE ON INVENTORY & SPECIALS
[FACEBOOK.COM/WWTRACTOR](https://www.facebook.com/WWTRACTOR)



**LATE MODEL DISMANTLED
FORESTRY MACHINES**

CATERPILLAR

525Ds 535Ds // 525Cs 535Cs 545Cs
563Cs 573Cs // 559Bs 559Cs

JOHN DEERE

648Ls 748Ls // 437Cs 437Ds
643L 843Ls // 643Ks 843Ks

TIGERCAT

620Es 630Es // 720Es 720Gs
718Es 724Es // 845D

**USED PARTS FOR MOST
BRANDS AND MODELS!**

**OVER
13
ACRES**

THE SOUTH'S
LARGEST *Used Parts* **INVENTORY**

VIEW MORE EQUIPMENT
AT OUR NEW WEBSITE
WWTRACTOR.COM
INFO@WWTRACTOR.COM



VISIT OUR YARD
1418 OLD HWY 52 SOUTH
MONCK'S CORNER, SC 29461
843 761 8220

**OVER
45
YEARS**



CONWAY, SC
(843) 397- 9400

WALTERBORO, SC
(843) 538-3122

NEWBERRY, SC
(803) 276-8030

POLKTON, NC
(704) 272-7685

ELIZABETHTOWN, NC
(910) 247-6391

Serving South Carolina for
over 70 years with quality
Forestry equipment, parts
& service.

Tidewater Equipment Company

"We Know Loggers"

Tigercat
Tough • Reliable • Productive

PROUD SUPPORTERS OF THE
SOUTH CAROLINA TIMBER PRODUCERS ASSOCIATION





WEST FRASER BUYS OSB MILL

West Fraser announced that it has entered into an agreement to acquire Georgia Pacific's oriented strand board (OSB) mill Fairfax SC for approximately \$280 million. The sale is anticipated to close following successful completion of U.S. regulatory reviews and satisfaction of customary conditions.

The Fairfax mill began producing OSB in 2007 when Grant Forest Products owned the mill. The mill has been idle since 2019. The estimated capacity is some 760 million square feet of 3/8-inch OSB.

West Fraser plans to invest an estimated \$70 million for upgrades and optimizations of the facility while preparing for the restart. The improvements will take about nine months to be completed.

The mill is expected to employ 135 people. The mill will be one of the lowest cost mills in the company's portfolio after the optimizations are complete and the mill is at full production. Once the restart occurs to get back to full production capacity this usually takes 18-24 months.

The mill is an attractive location for West Fraser due to the abundance of low cost wood fiber and forest resources in South Carolina and nearby Georgia. This mill and its production capacity will provide West Fraser flexibility to meet increased product demands for growing end-markets across the Southeast.



Samsara Onboard Cameras Member Program

SCTPA now partnering with Samsara for an Onboard Camera member program offering a 15% discount for active, dues paid, members and in certain situations a 20% referral bonus.

The average Logging Truck can save over \$2,000 a year with a smart WIFI Dash Camera by:

- Avoiding False Claims
- Decreasing Insurance Costs
- Reducing the chance of accidents by way of In-Cab Alerts



Dash cameras have proven their worth and value in many accidents to where the truck driver was not at fault in an accident. Dash cameras help to avoid the "he said, she said" situations in accidents. And of course

the dash camera can show a driver being at fault in an accident as well. Even if the driver was at fault, having the dash camera could potentially assist in the accident



samsara

investigation and the outcome.

Our litigious society now with all the screaming predatory plaintiffs' attorneys are out to get the most out of an accident for lawsuits. So why not try to protect your business and your drivers by installing dash cameras for improving driver and trucking safety, training and perhaps a little more peace of mind.

Samsara provides Real-Time GPS Tracking, Automatic Text Alerts with Footage, Live Streaming Footage and Advanced Intelligence In-Cab Audio Alerts.

Christian Houston-Floyd is the Samsara Account Executive. His direct contact is 470-502-6900 extension 3 or online at christian.houston@samsara.com.

Christian spoke at the American Loggers Council 2022 Annual Meeting in Couer d'Alene, Idaho. The Mississippi Loggers Association has had great success with their partnership with Samsara. SCTPA is proud to provide this Samsara program as a member benefit and service.



January 10, 2022

Re: S. 248 – “SC Hands-Free Act”

MEMO: Senate Transportation Subcommittee

The South Carolina Truck Caucus would like to express its strong support for S. 248, known as the “South Carolina Hands-Free Act.” Restricting certain types of hand-held devices, particularly cell phones, for all drivers is necessary to reinforce appropriate driving behaviors and improve roadway safety. This bill is a good step forward in working to reduce the number of crashes caused by cell phone distraction in South Carolina.

Since 2012, pursuant to the Federal Motor Carrier Safety Regulations (FMCSR), practically all commercial motor vehicle (CMV) drivers have been prohibited from texting and hand-held use of cell phones. Effectively, these drivers are federally prohibited from texting, holding, dialing, and reaching for a hand-held cell phone. These are very stringent restrictions placed on the trucking industry and the penalties for violating these regulations are significant.

Under the federal regulations, CMV drivers who are convicted of a hand-held cell phone violation twice within a three- year period will be disqualified for 60 days. If convicted for a third violation within three years, the driver will be disqualified for 120 days. Drivers are subject to federal civil penalties of up to \$3,685 for each offense. Motor carriers that allow their drivers to use hand-held cell phones while operating a CMV face a maximum civil penalty of \$14,739 per violation. Additionally, violating a distracted driving regulation results in a 10-point violation, the highest penalty, in the Federal Motor Carrier Safety Administration’s (FMCSA) motor carrier rating system.

As part of the federal requirement to obtain Motor Carrier Safety Assistance Program (MCSAP) funding, South Carolina has adopted the FMCSR. In meeting this requirement, South Carolina has codified by reference the FMCSR, which are enforced by the State Transport Police Division of the Department of Public Safety. The Truck Caucus further believes that if South Carolina is requiring strong restrictions for CMV drivers, these restrictions should apply to all drivers, and that violations should be issued via the Uniform Traffic Citation by all traffic law enforcement officials in the state.

Truck Caucus organizations, and their constituent members, consistently advocate for reasonable, uniform, and enforceable highway safety laws. Specifically, strengthening the distracted driving laws and regulations will save lives, improve fleet safety, while hopefully improving the state’s standing as worst-in-the-nation in highway deaths.

We urge the General Assembly to pass S. 248, which imposes restrictions on the general driving population consistent with those imposed on the commercial trucking industry.

Sincerely,





SURGING FUEL PRICES!...Who is it hurting?... Why is it hurting?... Where is it going?

By Todd Martin, Southern Loggers Cooperative
President & CEO, March 16, 2022

I was honored when asked by Clay Altizer and the Forest Resources Association (FRA) to weigh in on the surging fuel prices and the impacts on logging and forest products transportation sectors. Why? Well, it is not because I feel that we are the experts. I readily admit that prior to taking this position with the Southern Loggers Cooperative (SLC) in 2012 that I did not know much about the “fuel” business other than the fact that I had purchased many thousands of dollar’s worth of fuel in my 23-year career in logging, forest products trucking and chip milling leading up to that point. However, during the last 10 years I have learned much about the business side of the fuel industry. That still does not make me an expert. However, with the SLC’s 32 fueling locations across 7 states, just a little under 4,700 members, and approximate 55 million gallons of fuel pumped or dropped into member’s bulk tanks predicted for this year, I certainly believe that we have a good feel for what the fuel business is doing, or at minimum, we have a good feel for how prices move. We literally track it

daily and our fuel brokers track it hourly.

As a point of reference, let’s look back in time for just a moment. In April of 2018, I was honored to speak at the FRA’s Annual Meeting in New Orleans. On the day that I made my presentation at that meeting, SLC average fuel prices for On-Road and Off-Road fuel were \$2.70/gallon and \$2.22/gallon, respectively. Just a couple days prior to the 2020 Presidential Election (a very significant date in time) the SLC average fuel prices for On-Road and Off-Road fuel were \$1.79/gallon and \$1.44/gallon. Fast forward to the day that I researched our past pricing for this article (3/14/22) and the SLC average prices for On-Road and Off-Road fuel were \$4.72/gallon and \$4.11/gallon, respectively. In just a short 16-month period, the SLC average fuel prices increased \$2.93/gallon for On-Road (164% increase) and \$2.67/gallon for Off-Road (185% increase).

So, with that being said, let’s jump into the 3 questions in the title of this article.

Who is hurting from the surging fuel prices? Obviously, the answer to that question is EVERYONE. That certainly works its way right down to the consumer, regardless of whether they are buying lumber, paper, or a box of cereal at the grocery store. However, for the purpose of this article it is the logger and those that transport forest products. They are the ones that we have first-hand knowledge of

how much it is hurting. At least 90% of our SLC members are loggers and/or forest products truckers. Why is that important? In a recent Woods to the Mill article by the FRA’s Northeast Region Coordinator Eric Kingsley, he said “As is obvious to anyone in the forest industry, loggers and truckers are the

supply chain links that connect the woods to the mill. In FRA’s supply chain schematic, there are a lot of arrows connecting lots of products, but for anything to get from the woods to the consumer, the industry relies on loggers and truckers. If loggers aren’t healthy, it’s hard for any other sector to be healthy for very long.”

Why is it hurting? Aside from the changes over time that I mentioned above, the upward movement that we have witnessed since 1/1/22 has been at a rate that added efficiencies and fuel adjustments (if actually received) can’t keep up with.

(Continued on page 21)



(Continued from page 20)

Over the past 2 weeks alone (2/27/22 – 3/12/22), SLC prices average prices have increased \$1.23/gallon for On-Road and \$1.09/gallon for Off-Road. Around 50 cents of that increase for our prices took place in 1 single day. According to a recent survey by the American Loggers Council, Scott Dane – Executive Director indicates that just under 50% of those responding to the survey were showing a increases at or above 50% in their fuel costs in the first 2 months of the year. Keep in mind that this was before the invasion of Ukraine by Russia. Obviously, the rapid rise in fuel cost doesn't stop with "just" the fuel. It in increases every other item associated with operating their business. I encourage you to visit the American Loggers Council website and view the rest of the survey to see how all costs of operating has changed since the first of the year. Additionally, in our business, we see other issues that only add to the issue at hand with the surging fuel prices. In a conversation with our Executive V.P. & COO – Jason Slatten, made the following statement: "When fuel markets go haywire, one of the most common things we see at Southern Loggers stations is the "panic buy" or stockpiling. Because of the lag in our pump prices due to our pricing structure (our direct invoice cost plus a very small markup), we'll see a few members start showing up with piggyback tanks, drums, buckets, and any other container they can get a drop of that cheap fuel in. Owners send every truck they have, their buddies, cousins, and in-laws to fill up. That reaction to a rising market may seem like a wise one but is actually quite detrimental. Those guys got that cheap fuel stockpiled, but our tank is now empty. The next guy to come in who needs 100 gallons today to run his job is left standing there with nothing and now must find fuel somewhere else, paying Lord only knows what. Naturally, this leads to additional unproductive time chasing fuel and fewer loads to the set and to the mill. On those days when the fuel market is higher than a giraffe's butt, we're now left with no option but to purchase whatever we can just to wet the tank. The rub is now members will have to pay for that high day, instead of SLC being able to "sit out" on buying fuel that day and ride our inventory until tomorrow when the market may not be crazy. That's not always an option, as we have some stations that get a transport load (or two!) five days a week just to stay going. The big takeaway here is that you WILL NOT avoid fuel price increases in an economic and geopolitical climate like we currently have. You may sidestep it for a few days, but not for long."

Where is it going? This is a question that is often

posed to our primary fuel broker, Jamie Landers of FM Fuel and Resources. His answer is the same every single time "If I could tell you that, I would have an entirely different set of friends!" While that is comical, it is very true. Yes, there are speculators that speculate, and predictions made by everyone. However, nobody really knows! Sometimes we all like to pretend that we do, but we do not! In the political climate that we live in, one move by a person, or one word by another can change the whole course of how fuel prices are moving. I mentioned our COO – Jason Slatten above. He and I have these conversations on a daily basis. We wholeheartedly agree that from what we've heard and read from folks in the fuel industry, we should expect elevated prices for the near future. While we have witnessed some sizable drops in the past 5 days (3/10 – 3/15), domestic inventory for crude and products is down, as is production. Demand has ramped up now that the country has opened back up and will most likely increase even more once summer comes. Personally, I'm hoping that we/they are all wrong and domestic production goes full steam ahead tomorrow, and friendly foreign countries want to sell us some cheap crude to help us out in the meantime. The question is, in this political climate, will our government allow that to happen? We speculate but do not know that for sure!

I read a quote from a Minnesota trucker in an "As We See It" article by American Loggers Council Executive Director – Scott Dane that read, "The prices being paid to loggers and truckers are not keeping up to the increased cost of doing business." What we have started to see and hear in the past few days is that some consuming mills are providing some flat rate increases and fuel adjustments. While those increases are certainly appreciated. Is it enough? Has it been timely? What we here at the Southern Loggers Cooperative truly hope to see is consuming mills and other raw materials buyers adjusting rates closer to real-time. Our professional loggers and truckers need to be compensated for the increased costs they're incurring, rather than a bump for what's already past. A financially healthy raw materials supply chain can only be a good thing for the forest industry.

Things are tough! Doing business is tough! I would certainly rather write an article that is much more positive. However, I can always count on one of my board members and former Chairman of the board of the SLC – Greg Williams to remind me of this..... "It's A Fine Day for Logging!"

Western Star Trucks

This Log Truck Was Born To Be A Log Truck!

Here you won't find any highway trucks being passed off as work trucks. Because we started out building log trucks nearly 50 years ago, which means we understand the demands logging has. Big loads, tough conditions. Not just any truck can take two hundred thousand pounds down a muddy road and keep you safe.

You need trucks that were made for your job. That work just as hard as you do every single day. Trucks with powerful engines and strong transmissions. With a heritage of durability and reliability, backed by unmatched factory and dealer support. And we have a whole family of them that can be built to do whatever you need.

Shealy's Truck Center, Inc. is your Western Star Log Truck dealer located in Columbia, SC.

Contact: David Shealy ■ Office 803-771-0176 ■ Cell 803-467-7605

Jonathan Myers ■ Office 803-744-3711 ■ Cell 864-436-0198.

SC TIMBER PRODUCERS ASSOCIATION ACTIVE MEMBERS CAN RECEIVE UP TO A \$ 2,000 DISCOUNT.



We Specialize in:
Trailers - New & Used
Service & Hydraulics
Parts - We Ship Anywhere



Locations in:
Wilmington, NC
Spartanburg, SC
St. George, SC



www.pinnacletrailers.com

Inventory Arriving Daily!

Call Today 800-513-9373

New location in St George, SC -near Charleston !



LARGEST SALVAGE YARD IN SOUTHEAST



**TRUCK &
TRACTOR INC.**
www.tractor.com



CALL US FIRST FOR ALL OF YOUR USED FORESTRY AND CONSTRUCTION EQUIPMENT NEEDS. WE HAVE BEEN IN BUSINESS FOR OVER 34 YEARS SPECIALIZING IN QUALITY USED LOGGING AND CONSTRUCTION EQUIPMENT. NEW INVENTORY ARRIVING DAILY WITH 100% SATISFACTION ON PARTS!



**1418 OLD HWY 52 SOUTH
MONCK'S CORNER, SC 29461
WWW.WWTRACTOR.COM
843.761.8220**

DISMANTLING DAILY

CAT

515, 525, 525B, 525C, 535B,
545, 320BLI & 322

BARKO

160B, 160B, 275B & 775B

FRANKLIN

3000, 3600, 105, 170, 405,
560, C5000, Q70 & Q80

HYDROAX

411B2, 611B2, 411E, 511E, 611E,
411EX, 511EX, 611EX, 711EX & 570

JOHN DEERE

440B, 540B, 548B, 648B, 648C, 648GII,
648GIII, 748GII, 748GIII, 643, 643D,
643G, 843G, 843H, 653E, 753 & 848

PEERLESS

2770

PRENTICE

210C, 210D, 210E, 310E, 325, 384,
410C, 410D, 410E & 410EX

TIGERCAT

230, 240, 718, 720, 720B, 720C, 720D,
726, 726B, 620, 630B, 845 & 845B

TIMBERJACK

240, 380A, 380B, 450B, 450C, 460,
460D, 608, 608S, 618, 735, & 850

TREEFARMER

C6D & C7F



FORESTRY MUTUAL

forestrymutual.com

INSURANCE COMPANY

Setting the

STANDARD

Is what sets us apart!

*Celebrating over 50 years providing affordable WORKERS' COMPENSATION Coverage
Specializing in the FOREST PRODUCTS INDUSTRY*

TOLL-FREE 800-849-7788

CONTACT ANY OF OUR AGENTS TODAY FOR A QUOTE!

Eddie Campbell: (919) 770-6132

Greg Hutson: (843) 324-4728

Nick Carter: (803) 669-1003

Chris Huff: (919) 810-9485

Alan Schaefer: (912) 414-9778

Jack Williams: (601) 760-0011



PROVIDING COVERAGE IN GA, MS, NC, SC, TN & VA



Team Safe Trucking Driver Safety Training Programs

South Carolina Timber Producers Association is providing your company with **Team Safe Trucking Driver Refresher Training Program**. TST training courses are the most convenient and user-friendly truck driver safety training courses available. They focus specifically on transportation of forest products. Trainees can access TST training courses at any time using a smart device or computer with internet access. A detailed record of completed courses, the training material used for training, the date and time the training was completed, and a training certificate is available for each course completed through the online training management platform. This information can be made available to business owners, insurance companies and logger associations. The convenience of “on-demand” driver safety training will save time and money, allowing more time for productivity while complying with governmental and insurance carrier mandates. These courses can be accessed free of charge. This unique training platform is designed with input from forest products truck drivers, owners, and other experts across the nation.



Team Safe Trucking Driver Safety Training Modules Outline (additional modules available covering various subjects)

The South Carolina Timber Producers Association Educational Sponsor Website

southcarolinatimberassociation-teamsafe.talentlms.com - (31 courses) Driver Refresher Training Program Courses
Group Key: SCTP Association

Create a free account for yourself and all your drivers and start your fleet safety training program today!

The Team Safe Trucking trainings include the following:

Introduction to Team Safe Trucking, Clearances, Driver Condition, Distracted Driving, Driver Qualification, Preventing Rollovers, Vehicle Condition, Speeding

Driver Refresher Training Courses:

Passing and Being Passed, Coupling and Uncoupling, DOT Inspections, Right of Way, Backing, Following Distance, Railroad Crossings, Fatigue, Turns and Curves, Driver Training, Fleet Safety Programs, Breakdowns, Alcohol and Drugs Part 1, Driver Selection, Mill Safety Challenges, Multi-contractors, Entering and Exiting, Mill General Safety, COVID19 & Wood Roads, Alcohol & Drugs Part 2, Maintenance & Vehicle Condition, Accountability, Loading and Unloading, Fall Prevention, Basic Operation, Hours of Service Requirements, Driver Orientation, Fatigue and Wellness Awareness, Control System and Dashboard, Post-Crash Procedures, Pre- and Post-Trip Inspections, External Communications, Basic Control, Whistleblower/Coercion, Shifting and Operating Transmissions, Trip Planning, Backing and Docking, Drugs/Alcohol, Coupling and Uncoupling, Medical Requirements, Safe Operating Procedures, Visual Search, Communication, Distracted Driving, Speed Management, Space Management, Night Operation, Extreme Driving Conditions, Advanced Operating Practices, Hazard Perception, Skid Control/Recovery, Jackknifing, and Other Emergencies, Railway-Highway Grade Crossings, Vehicle Systems and Reporting Malfunctions, Identification and Diagnosis of Malfunctions Part 1, Identification and Diagnosis of Malfunctions Part 2, Identification and Diagnosis of Malfunctions Part 3, Roadside Inspections, Maintenance, Non-Driving Activities, Introduction to Non-Driving Activities Part 1, Introduction to Non-Driving Activities Part 2, Handling and Documenting Cargo, Environmental Compliance Issues

S C Timber Producers Association
Crad Jaynes, SCTPA President & CEO
P.O. Box 811, Lexington, SC 29071
601 Carola Ln, Lexington, SC 29072
Phone: (803) 957-9919
<https://scloggers.com/>
bcjpaw@windstream.net





Willard Office Building, 1455 Pennsylvania Ave.
NW, Suite 400, Washington, DC 20004
202-627-6961, scott.dane@amloggers.com
www.amloggers.com

Pandemic Assistance for Timber Harvesters and Haulers (PATHH) Program

Supplemental Funding Request



Executive Summary

The American Loggers Council is pleased to announce that the Pandemic Assistance for Timber Harvesters and Haulers (PATHH) program was a historic and unprecedented success for timber harvesters and haulers across the United States! Unfortunately, the demand for financial assistance from America's timber harvesters and haulers exceeded the \$200 million appropriated by Congress by almost double.

This unmet need forced the United States Department of Agriculture, Farm Service Agency, to adjust the original formula to a point where in many cases the amount of financial assistance was reduced to less than half of what the applicant would have been eligible for. As an example, an applicant that would have been eligible, based on their gross income loss multiplied by 80% (original formula) for \$180,000 would have been limited to a maximum award of \$125,000. The new formula, due to the excess request for assistance, limited the maximum to \$75,000 and then applies a multiplier of 70.5% to that figure resulting in a maximum limit of \$52,875. This is 42% of the originally announced assistance level that timber harvesters and haulers expected would be provided to them in late 2021.

Additionally, where the original assistance formula would have provided for 80% of the gross revenue loss, the new formula only provides 70.5% of the gross revenue loss.

This level of need is evidence of the economic impact that the COVID-19 Pandemic has had on the American timber industry. Multiple economic analysis reports indicated that the loss to timber harvesters and haulers exceeded \$1 billion. Congress recognized that timber harvesters and haulers had been left out of prior pandemic relief programs by appropriating \$200 million. Now that the real economic need has been verified, and to meet the intent of Congress in providing adequate assistance to this vital industrial sector, a supplemental appropriation of \$185 million (as per Farm Service Agency data) needs to be appropriated.

(Continued on page 27)

(Continued from page 26)

Additional supplemental appropriations have been provided for other disaster and assistance programs when the demand exceeded the initial funding appropriation.

Bipartisan Congressional consideration is currently being explored to provide \$38 billion in additional small business COVID relief due to the impacts of the new variant Omicron. The escalating infection rate is impacting every sector of the economy. The negative economic impacts today is equal to, or exceed, those experienced a year ago when Congress recognized the need to assistance for the timber industry.

The American Loggers Council, and the timber industry that we represent, is extremely appreciative of the PATHH program assistance. The program received bi-partisan support in Congress and has also been supported by the Administration. Unfortunately, the program application process has also revealed the extent of economic loss and need within the timber industry sector. Therefore, the American Loggers Council respectfully requests a supplemental appropriation of \$185 million in order to meet Congress's full intended level of assistance to the timber harvesters and haulers sector.

Need

This level of need is evidence of the economic impact that the COVID-19 Pandemic has had on the American timber industry. Multiple economic analysis reports indicated that the economic loss exceeded \$1 billion. Congress recognized this in appropriating the \$200 million. Now that the real economic need has been verified, and to meet the intent of Congress in providing adequate assistance to this vital industrial sector, a supplemental appropriation of \$185 million (as per Farm Service Agency data) needs to be appropriated.

Therefore, to meet the Congressional Intent of the PATHH program and based on actual need and demand as demonstrated by the over subscribing of the PATHH program, it is necessary to secure supplemental funding in the amount of \$185 million. The American Loggers Council proposes three options as avenues to increase the PATHH program funding to ensure adequate assistance is provided

to preserve the logging and trucking infrastructure:

Reprogramming USDA FSA Funding:

Identify FSA program funding that did not "get to ground" and transfer that funding to the PATHH program.

Congressional Appropriation As Part of the 2022 Appropriation Bills

Similar to the 2021 Consolidated Appropriations Act, from which the PATHH program received bi-cameral / bi-partisan support, Congress should include \$185 million as supplemental funding for the PATHH program.

Additionally, the premise for the initial assistance was based on the impacts of the COVID-19 virus experienced between 2019 and 2020. Unfortunately, the virus has evolved into different variants and resulted in ongoing infection rates equaling or exceeding those experienced during the first year. Impacts and uncertainty continue to threaten the timber industry. Fully funding the level of assistance needed, as opposed to a partial measure, will provide substantive assistance that will effectively meet the needs and intent of the PATHH program.

Inclusion of PATHH Funding in the Proposed \$68 billion Small Business Relief Package

A bipartisan group of Senators are drafting an additional \$68 billion small business targeted relief package due to the impacts of the Omicron COVID variant. Including the PATHH program funding shortfall (\$185 million) in this effort would backfill the funding deficit that resulted in significant reductions in initial aid amounts, at a time when additional COVID impacts are likely to affect the labor force within the timber industry.

Justification

Congressional appropriations for industry specific programs have historically been based on eighty percent (80%) of economic impact (loss). Based on the two economic impact studies (referenced) that would have resulted in \$800 million - \$1.3 billion. The initial \$200 million represents twenty percent (20%) of the lesser estimate. Supplementing the PATHH program with an additional \$185 million, to

(Continued on page 28)

(Continued from page 27)

fully fund the documented need, will result in 40% of actual economic loss. Much less than other industry specific assistance programs.

The jobs represented by the timber industry are rural and in areas that are historically underserved communities. Additionally, as an example, the labor force within the timber industry in the Southeast is comprised of minority populations well in excess of the national population demographics. The leading state recipient of PATHH program assistance was Mississippi. The timber industry in Mississippi is the second largest agricultural commodity with an estimated value of \$1.15 billion. The African American demographics of Mississippi census data identifies 38% of the population as African American. The Mississippi timber industry employs 62,000, including a significant number of minority people of color. Compared to the national percentage of African American's employed in the logging industry (4%), the employment in Mississippi and much of the Southeast exceeds that by many times. Based on these statistics and data, it is evident that the timber industry supports historically underserved demographics and communities. Therefore, it is important to support the PATHH program which supports these targeted groups.

Preservation of the timber management infrastructure is vital to supporting the environmental benefits achieved through healthy forest management. The timber resource represents an opportunity to reduce fossil fuel, carbon emitting, use by producing renewable fuel from forest-based feedstock as demonstrated with the potential for development of bio-crude, Sustainable Aviation Fuel (SAF) and cellulosic renewable fuels (D-3 and D-7) as per the EPA Renewable Fuel Standard.

Healthy forests require active silvicultural based scientific management. The logging industry is one of the primary tools employed by public and private land managers to achieve healthy forest objectives. Healthy forests sequester more carbon, and forest products capture and store carbon, more than unhealthy forests subject to infestation, mortality, and fire.

As a snapshot of the PATHH program and what the underfunding of the program means to individual states, Mississippi is a good example;

Funded Applications - 389

Total Eligible Assistance - \$33,224,347

Adjusted Assistance Received - \$15,635,025

(A state by state comparison of the same information is attached.)

The additional funding will be applied to previously submitted and approved applications based on the original assistance formula. No new application period would be opened, or applications accepted.

Conclusion

The American Loggers Council, and the timber industry that we represent, is extremely appreciative of the PATHH program assistance. The program's success has exceeded expectations and has received bipartisan support in Congress, as well as Administration support. Unfortunately, the success of the program has also revealed the extent of economic loss and need within the timber industry sector. Therefore, the American Loggers Council respectfully requests an additional supplemental appropriation of \$185 million in order to meet Congress's full intended level of assistance to the timber harvesters and haulers sector.

Aside from the shortfall in funding, the PATHH program was an unprecedented historic public / private partnership success. The USDA / FSA / USFS effort and response was unparalleled. In fact, as a result the PATHH program team members from the public and private sector have been selected for the prestigious USDA "Chiefs Award."

To realize the full Congressional intent of the PATHH program and level of assistance, the American Loggers Council respectfully requests Congressional support of this supplemental \$185 million funding request for the PATHH program through reprogramming of USDA funds, inclusion in the 2022 Appropriation Bill or inclusion in the pending \$68 billion COVID Small Business Relief bill.

\$100 NEVER TOOK YOU SO FAR.

...BREAKING NEWS...

After months of hard work, we have launched our new website. Members will now have access to their SLC invoices 24/7 with a member login! Amongst the new features are the "find the nearest station" to my location feature, an approved national tires and parts dealers with location info, fill out an application on-line and other features that will assist in the improved communication with our members. The SLC's founding "Cost-Cutting Mission" continues!



AN INDEPENDENT FORESTRY & AGRICULTURAL COOPERATIVE

www.SouthernLoggers.com



29 FUELING STATIONS

Brewton, AL
Claiborne, AL
Cottonton, AL
LaFayette, AL
Moundville, AL
Pennington, AL
Pine Hill, AL
Selma, AL
Campti, LA
Carmel, LA
Chopin, LA
DeRidder, LA
Hodge, LA
Mansfield, LA
Pineville, LA
Port Hudson, LA
Winnfield, LA
Zwolle, LA
Monticello, MS
Redwood, MS
Chillicothe, OH
Allendale, SC
Georgetown, SC
Orangeburg, SC
Domino, TX
Evadale, TX
Lufkin, TX
Pineland, TX
Covington, VA

Please contact our
endorsed SC Timber
Producers Association
broker - Mark Snelson
(843)325-1211
msnelson@sc.rr.com

Our Mission | To revolutionize what EMPLOYER GROUPS expect from their Agency.

A Revolutionary New Experience

We feel that groups in today's complex and constantly changing environment need more than simply proposals and service. We understand that you are expected to sometimes be a lawyer, accountant and human resources department all at once, and we've expanded our portfolio of services to include things to help you wear all those hats.

Here are some of the cool things we are doing very, very well.

Online Benefit Enrollment Tool

Enroll and manage your entire employee benefits package online — no more paper forms!

Customized Benefit Booklets

We create a customized professional benefit booklets for you. They run the full gamut of all the benefits that your group offers their employees.

ERISA WRAP Documents

That's right, we will complete the ERISA WRAP Documents, and have the full Summary Plan Descriptions (SPDs) including mandated ERISA language ready for your group to distribute to employees

Full Online HR Library

Easily share our HR Library with your employer groups and can assist them with such areas as OSHA, ERISA, COBRA, Immigration, Taxation and more.



Quoting Tool

Send us a small group census and we'll send you quotes back from every fully insured carrier available in your market in one concise, easy to read spreadsheet.

1094 Completion and Distribution

We take the burden off the HR administrators by providing all forms ready to distribute to the employees of your insured groups, as well as signature ready employer tax forms. All your customers have to do is distribute them to their employees, sign the corporate form and mail to Uncle Sam.

ACA Compliance

Our software tracks and maintains your plan to make sure that you are hitting the required governmental benchmarks.

Our Carriers



ATTENTION SC Timber Producers Association Members!! Our exclusive broker, **Mark Snelson** is here to help you with all of your Medicare needs. Please contact him at:

(843)325-1211 or msnelson@sc.rr.com

Medicare Supplement Plans from BlueCross BlueShield of South Carolina



Medicare alone won't pay for all your expenses. We can help you fill the gap! Call **Mark Snelson** at **(843)325-1211**. Mark is an authorized agent for BlueCross BlueShield of South Carolina, an independent licensee of the Blue Cross and Blue Shield Association.

NEW SCTPA MEMBER BENEFIT & SERVICE



**Contact Steve Wilt (843) 566-5463
or Jalisa Byas (803) 381-2198 to Get
Your Savings.**

NEW Michelin & B. F. Goodrich Tire Discount Program

SC Timber Producers Association is proud to announce a New Member Benefit Program. SCTPA has partnered with Michelin and B. F. Goodrich (BFG) to offer ACTIVE dues paid members the opportunity to save money on tires through this program.

SCTPA President Crad Jaynes said, "SCTPA is pleased and proud to partner with Michelin North America to offer this valuable and cost saving opportunity for our members. Our members are always our first priority and when our association can provide a cost saving program like this, it is a "win" for everyone. I appreciate Michelin partnering with us in this program."

This program is available to ALL active dues paid members in all SCTPA member categories. Program is effective as June 1, 2019. Members are able to visit any local Michelin dealer. Program requires an application be completed and the use of a credit or debit card.

Member Process for SCTPA Michelin & BFG Tire Program

- 1) Contact SCTPA to receive active member number, membership period and member status (logger, wood dealer, etc.).
- 2) Must be an Active Dues Paid SCTPA Member.
- 3) Interested SCTPA members should reach out to your local Michelin Tire Dealer.
- 4) Complete the application and forward it to Jalisa Byas (Jalisa.byas@michelin.com) or Steve Wilt (Steve.wilt@michelin.com) Jalisa is the SC Representative and Steve is the Territory Manager. Application available from SCTPA. Write your SCTPA member number and member period on the application at the top left under Michelin logo. *Example: SCTPA ##### / 01-01-19/20*. Sign and send both the Application and Conditions of Sale pages.
- 5) Either Jalisa and/or Steve will verify active membership with SCTPA's Crad Jaynes.
- 6) Once application is verified, it will be sent to Michelin for approval.
- 7) Michelin will provide the customer with a Bill To and Ship To Number. At that time, the member will have to Register their account at **Michelinb2b.com** and upload the member's Credit or Debit Card.
- 8) Program available to ALL members registered as active dues paid SCTPA members.
- 9) Program available for Michelin and B.F. Goodrich tires. Tires available are Truck, Light Truck, Passenger Car & Agricultural, Industrial & Off Road Tires & Retreads.
- 10) Once a member is registered on **Michelinb2b.com**, member will have access to all their purchase reports and tire pricing.
- 11) Members can go to any Michelin dealer to purchase tires.
- 12) Tires cannot be ordered online or shipped to the customer. Must go through a Michelin dealer.

SCTPA is pleased to offer our members this tire discount program on the high quality tire products offered by Michelin Tire and B. F. Goodrich Tire. Should a member have any questions, feel free to contact SCTPA.



FLINT

WWW.FLINTEQUIPCO.COM

DIAGNOSED — AND EVEN REPAIRED — FROM AFAR.

WITH JOHN DEERE CONNECTED SUPPORT™, your machines are constantly monitored by John Deere and your local dealership to help reduce, or even prevent, costly downtime. Cutting-edge technology, such as remote diagnostics and programming, lets technicians perform work like they're in the woods — even when they're not. All so you can get back to work fast, and **OUTRUN™**.

OUTRUN™

Adairsville, GA • 770-773-9857 | Albany, GA • 229-888-1212 | Andrews, SC • 843-221-4940 | Atlanta, GA • 404-691-9445 | Aynor, SC • 843-358-5688
Braselton, GA • 770-965-1889 | Brunswick, GA • 912-264-6161 | Columbus, GA • 706-687-3344 | Cuthbert, GA • 229-732-2631 | Dothan, AL • 334-794-8691
Grovetown, GA • 706-855-5440 | Ladson, SC • 843-572-0400 | Macon, GA • 478-788-1586 | Savannah, GA • 912-964-7370 | Simpsonville, SC • 864-963-5835
Troy, AL • 334-566-4181 | Valdosta, GA • 229-474-6680 | Walterboro, SC • 843-539-1420 | West Columbia, SC • 803-794-9340

How Much Can South Carolina Loggers Save? Let TimberHauling.com Show You!

With the cost of parts, supplies, insurance, and almost everything else going up, a platform exclusively for timber haulers and harvesters is needed now more than ever.

With TimberHauling.com, you can see how much your operation can save using our **Savings Calculator**. Enter your costs and we'll show you the amount our vendors can save your business. Test out the calculator for yourself, go to TimberHauling.com. Once you're there, go to the top menu and click on the **Savings Calculator** to enter your expenses. You'll see how fast the discounts add up.

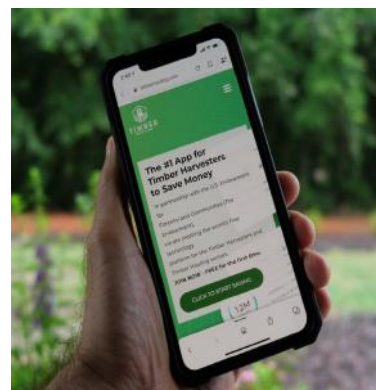
When you see the final savings, note that the **Savings Calculator** estimates are conservative, meaning you could potentially save even more than the calculator says. Depending on your expenses, your savings may very well exceed \$10,000 annually by purchasing through this platform.

The information you enter in the **Savings Calcu-**

lator is not kept by the platform in any way. Our only goal is to help you and your business reduce your expenses and keep more money in your pocket.

TimberHaul-

ing.com currently has close to 20 vendors and is adding more regularly, but we want to do more to work for you and your business. What other services would you like to see? What other vendors do you want on the site? Let us know! Email us at support@timberhauling.com.



Timber Talk

*Your Voice for South Carolina
Timber Harvesting*

Contact Crad Jaynes at
1-800-371-2240 or bcjpaw@windstream.net

McMorris Rodgers, Westerman Lead Legislation Banning Timber Imports From Russia



WASHINGTON - Today, House Committee on Natural Resources Ranking Member Bruce Westerman (R-Ark.) introduced the No Timber From Tyrants Act with the support of more than 80 members and 35 industry groups. This legislation would prohibit imports of forest products from Russia and Belarus while ramping up responsible harvesting of American timber to create new jobs, produce more sustainable wood products and make U.S. federal lands more resilient to catastrophic wildfires.

"America should be pushing back on Putin's war of aggression from every possible angle, and there's no better way to do that than by cutting Russia's economy off at the knees. We imported hundreds of millions of dollars' worth of wood products from Russia last year alone, giving Russia the power to channel those funds directly into Putin's war. No more. By immediately banning the import of all Russian timber, we can not only deal a harsh blow to tyranny, but we can also simultaneously boost American industries. Enough rhetoric - it's time to show Putin we mean business and stop economically propping up his senseless violence. I'm proud to see so many of my colleagues joining me in this effort, and hope to see this bill passed quickly." - House Committee on Natural Resources Ranking Member Bruce Westerman (R-Ark.)

"As long as Putin's unhinged, evil genocide in Ukraine continues, we'll use every tool at our disposal to isolate and weaken his regime and its financing. The No Timber From Tyrants Act is a just response to this dictatorial aggression and will simultaneously stimulate

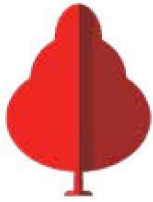
the American forestry industry and promote forest health." - House Committee on Agriculture Ranking Member GT Thompson (R-Pa.)

"The timber industry helped build the Pacific Northwest, and with more than 6.5 million acres of forestland, Eastern Washington is in a position to lead and deliver results. By proactively managing these forests and responsibly harvesting more timber, we can increase exports to support our allies, decrease the world's dangerous dependence on Russia, and make our lands more resilient to catastrophic wildfires. The No Timber From Tyrants Act is a win-win for Eastern Washington and the United States. Just like the American Energy Independence from Russia Act, this legislation will help us expand our energy dominance on the world stage and fight back against Putin, and I'm proud to help introduce it today- House Committee on Energy and Commerce Ranking Member Cathy McMorris Rodgers (R-Wash.)

Background

In 2021, the U.S. imported more than half-a-billion dollars' worth of wood products from Russia (\$459 million) and Belarus (\$52 million). Russia is the world's fourth largest exporter of wood, and wood exports are a \$12 billion industry for President Vladimir Putin. Since Russia's unprovoked invasion of Ukraine, global forest certification systems have begun classifying wood products from Russia and Belarus as "conflict lumber." As U.S. leadership looks for ways to cut off resources funding Putin's war, wood products are an obvious way to further economically isolate Russia while simultaneously supporting American businesses.

To replace this conflict timber, the No Timber From Tyrants Act will increase responsible harvesting on federal lands in the amount necessary to make up for lost imports. Securing American independence from wood supplied from Russia and Belarus will greatly enhance American forest management and create vitally important economic opportunities for rural communities to produce more American wood products. Harvesting more wood products in the U.S. under rigorous environmental standards will also help address our nation's current wildfire crisis by supporting more active management to improve forest health and reduce the risk and severity of catastrophic wildfires.



HIGH RISK WHILE SECURING A LOAD

Reviewed by: Jeff Jenkins, FRA Appalachian Regional Consultant, jjenkins@forestresources.org



SAFETY ALERT • MARCH 2022

22-S-02

BACKGROUND

On a clear spring day in the Appalachians, a timber harvesting operation was actively working. The loader operator was engaged in loading a tractor-trailer with two bunks of 20' pulpwood. The first bunk was loaded, and the loader operator began to load the second bunk.

PERSONAL CHARACTERISTICS

The loader operator was in his early 50's and had been working in the logging industry for over 30 years. The contracted truck driver was also in his 50's and had been hauling wood for several years. It is unknown what formal safety training either of the workers had.

UNSAFE ACT

The front bunk had been loaded, and the truck driver approached the truck on the far side of the trailer and began to unroll his tie-down straps. The loader operator could not see the driver and wasn't aware that he had walked close to the trailer. The driver wasn't wearing a hardhat or other safety equipment.

CLOSE CALL

The company forester, arriving on to the job, observed the situation. He saw the grapple, full of wood, carried high over the trailer while the driver was busy working on the opposite side. The forester moved quickly to get the loader operator's attention and stopped the loading process. No accident occurred, but the situation presented a high risk. If the wood had slipped or a hydraulic line broke, there could have been a serious injury or fatality.

INJURY

None. The owner of the crew was grateful that the forester intervened.

RECOMMENDATIONS FOR CORRECTION

1. Always wear the proper PPE in the landing area and the woods.
2. Never assume an operator knows where you are.
3. Always make eye contact with the operator and communicate that it is safe to approach the area.
4. Establish universal hand signals between crew members when voice commands can't be heard.
5. Always move the truck away from the loader and in a safe place before securing the load.



FOREST RESOURCES ASSOCIATION

The Forest Resources Association (FRA) represents diverse segments of the wood fiber supply chain, promoting forest products industry members' ability to compete successfully in the global marketplace.

WELCOME BACK! 2022 SCTPA ANNUAL MEETING



Sunday Prayer Breakfast



Ewell Smith, TimberHauling.com



Robby Crowder Accepts Board Service Award



Port City Quartet



Silent Auction Child's Picnic Table



Jack Gaston Accepts 2020 Logger Activist Award



Crad and the "Commissioner"



Will Chapman Accepts Board Service Award for Rickey Chapman



Colby Crosby Accepts 2021 Logger Activist Award



Silent Auction Items

AND THERE'S MORE...



Derek Breedlove, Vestige



Live Auction Cedar Swing



TEAM Safe Trucking President



Greg Hutson & MVP Award
Winner Kendra McKittrick



Live Auction Coffee Table



Fun Time Choir



SC State Forester Scott Phillips



Attorney Stephen Setliff
The Setliff Law Firm





Timber Talk

*Your Voice for South Carolina
Timber Harvesting*

Contact Crad Jaynes at
1-800-371-2240 or bcjpaw@windstream.net

WORKING TOGETHER TO MEET THE TRANSPORTATION NEEDS OF THE TIMBER INDUSTRY



Offering Trailer Sales, Finance, Service and Parts

CRTS is proud to be the authorized dealer for Utility, Peerless, MAC, Wilson, Trailstar, Stoughton and Kentucky. We offer one of the largest inventories in the Southeast with new and used trailers of all makes and models. Also, customized spec's are our specialty. Our design engineers can assist you in creating a unit to meet your specific needs.

Utility - Reefers, Dry Vans, Flatbeds, Tautliners
Peerless - Open Tops, Chip Trailers, Live Floors
MAC - Dumps, Refuse Trailers, Flatbeds
Wilson - Hopper Bottom and Conveyor Belt Trailers
Stoughton - Dry Vans
Kentucky - Moving Vans
Trailstar - Dump Trailers

**Call CRTS 800-662-7026
or 919-773-4000
www.crtsinc.com**

"Locations in North Carolina, South Carolina and Virginia"



Commonwealth Trailer Rentals



Offering Trailer Leasing and Rental Programs

CTR offers a wide variety of leasing programs as well as short term rentals for peak season. CTR boasts one of the newest live-floor fleets in the southeast. We also offer late model refrigerated trailers.

**Call CTR 866-839-3495
www.rentctr.com**

CTR LOCATIONS

MARYLAND - VIRGINIA
NORTH CAROLINA - SOUTH CAROLINA
GEORGIA - ALABAMA - TENNESSEE - FLORIDA

(Baltimore and Orlando pick up and drop off available)





Mark Your Calendar

April 2022

17 Happy Easter Day
29 - 30 Mid-Atlantic Logging Expo, Laurinburg, NC

May 2022

19 SCTPA Board of Directors Meeting, 10:00 a.m., Hampton Inn Harbison,
Columbia
30 Memorial Day Holiday

SCTPA is available to those that need to view the 2021 SFI Timber Operations Professional (TOP) Update video to continue to be SC SFI Trained. June 30, 2022 is the deadline for viewing the 2022 TOP Update. Contact SCTPA and a group live class or individual class can be arranged.

Spring district meetings will be considered for scheduling and dependent on the continued COVID situation. District Meeting dates are subject to change. Meeting notices will be mailed, posted on SCTPA Facebook page and listed on the website www.sclloggers.com prior to scheduled meeting.

Members & Non-Members are encouraged to attend our district meetings to know what the issues are affecting the industry.

Need SFI Trained DVD Class or other training?

SCTPA can provide the New DVD Training Module for SFI Trained status. SCTPA is an approved DVD training class facilitator and will be scheduling classes during the year. Other training programs are available for safety, driver training, equipment lockout & tagout, hazardous materials spill control on logging sites and forestry aesthetics.

Truck Driver Training Workshops will be scheduled. Watch the Mark Your Calendar section of this newsletter for dates. Notices for SCTPA workshops & events will be forwarded.

Crad Jaynes
President & CEO
SCTPA

PO Box 811, Lexington, SC 29071
800-371-2240 Fax: 803-957-8990
bcjpaw@windstream.net

Kathy Fudge
Communications Director
SCTPA

PO Box 811, Lexington, SC 29071
803-608-3357
khfudge@gmail.com

SCTPA Board of Directors

Chairman: Joseph "BoBo" Seckinger
Seckinger Forest Products, Inc.
Hampton
Cell 803-571-0019

Vice Chairman: Josh Key
Beech Island Timber & Construction, Inc.
Jackson
Cell 803-507-8995

Secretary-Treasurer: Griff Wilson
WilRidge Forestry, LLC
Chester
Cell 803-209-3053

Danny McKittrick
McKittrick Timber, LLC
Heath Springs
Cell 803-320-1739

Colby Crosby
Crosby Logging & Timber, Inc.
Ridgeland
Cell 843-321-1432

Billy Walker
Walker & Walker Logging, LLC.
Laurens
Cell 864-923-0385

Donnie Lambert
Leo Lambert Logging, Inc.
Georgetown
Cell 843-340-8408

Tommy Barnes
Ideal Logging, Inc.
Edgemoor
Cell 803-385-7994

Carey "Buster" Harrison
Harrison Forest Products, Inc..
Round O
Cell 843-908-0085

Bob Lussier
Great Woods Companies, LLC
Bennettsville
Cell 860-377-5318

John Rice
Rice Land & Timber, LLC
Allendale
Cell 803-259-6202

Crad Jaynes
President & CEO



PO Box 811

Lexington, SC 29071

800-371-2240

803-957-8990

bcjpaw@windstream.net

*The **only** insurance agency
endorsed by and supporting
your Association.*

*The South Carolina Timber
Producers Association*

Representing the leading logging insurance carriers
including the only logger owned carrier Forestry Insurance
Company of the South East

Commercial Auto • Workers Compensation • Equipment Marine
• General Liability • Excess Liability • Property

The leader in the Fleet Management Practices
Contact: Jeremy Barclay, David Hayes, Michelle Hopkins
and Rick Quagliaroli

Swamp Fox Agency

P.O. Box 1318 • Moncks Corner, South Carolina 29461
843-761-3999 • Toll Free: 888-442-5647



*"Serving the Forestry Industry
For Over 35 Years."*



Our Mission

The Mission of the South Carolina Timber Producers Association is to serve as the voice for timber harvesting and allied timber businesses to advance the ability of its members to professionally, ethically, efficiently, safely, environmentally and profitably harvest, produce and transport timber to meet the timber supply demands of our state by providing continuing educational and training opportunities, distributing timber harvesting, hauling, manufacturing and selling information, representing our members in national and statewide legislative activities, and aggressively promoting, supporting and conducting programs of state, regional and national advocacy.