



TIMBER TALK

Your Voice for South Carolina Timber Harvesting

MAY/JUNE 2021

Back to Teaching Teachers Sustainable Forestry

By Crad Jaynes, SCTPA President

After the 2020 SC Sustainable Forestry Teachers Tour was cancelled due to the Covid pandemic, the 2021 Teachers Experience was held the week of June 21 – 25, and was based out of Georgetown.

It was a great week being with the twenty-one teachers from all around the Palmetto state to teach, show, demonstrate and provide the facts about sustainable forestry, the Sustainable Forestry Initiative, private, commercial and public forest management, reforestation, timber harvesting, tree farming, wildlife and wildlife habitat management and forest products industry for solid wood and pulp and paper products. The teachers got a full dose of how important our \$22 billion industry is to our state.

The teachers were a fun bunch. They were eager to learn about our industry and witness first hand at the various tour stops how and why sustainable forestry is practiced. As I told them in my tour opening presentation on Monday morning, "We are

going to treat y'all like kings and queens and not a bunch of dang ole teachers."

I was excited about their enthusiasm and willingness to ask questions and desire to understand the different facets of the forestry and forest products industries.

Emily Oakman, Forestry Association of SC and I accompanied the tour for the full week and Matt Schnabel and Beth Foley, Project Learning Tree (PLT) educators with the SC Forestry Commission were with the tour for two and a half days each. Thanks to



TEACHERS AT BUCK HALL RECREATION AREA

Emily for heading the tour and to Matt and Beth for their presence and PLT activities.

The teachers had to do some online work and preparation before the tour to be acquainted with forestry terms and get a

basic understanding of what they would see and hear on the tour. The teachers receive continuing education credit and even graduate credit for attending the week long experience.

The group gathered early Monday

(Continued on page 2)

Inside ...

2021 SC Sustainable Forestry Teachers Tour	Cover
ALC 2021 International Truck Rebate Program	6
"Let the Sawdust Fly"	9
ALC 2021 Western Star Rebate Program	12
Congressman Westerman's Statement on Incoming USFS Chief	13
Welcome New Members	14
As We See It ... July 2021	15
Scott Dane to Become Next Executive Director for ALC	16
ALC 2021 Peterbilt Rebate Program	17
SCFC Establishes Temporary Logging Bridge Rental Program	19
SCDOT Temporary Logging Entrance Blanket Encroachment Permit in Effect	20
Sen. Collins Urges Agriculture Secretary to Quickly Distribute Delayed COVID-19 Relief Funding for Loggers	21
Lumber Prices Have Bottomed Out	27
White House Announces Support for Bipartisan Infrastructure Framework	28
Timber Haling Platform Launches	31
Top Senators Press Biden to Do More on Forest Management to Counter Wildfires	32
U.S. Endowment Launches Timberhauling.com Platform	38
U.S. Senate Moves China Competitiveness Bill	39
Rep. Boebert Introduces Wildfire Bill	40
SCTPA Attends SC U.S. Senator Tim Scott Event	41
Mark Your Calendar	42

(Continued from page 1)

morning at the Hampton Inn Georgetown and loaded onto the charter bus and headed to Horry-Georgetown Technical College for a Teachers Experience, as I like to call it, introduction, a Project Learning Tree exercise by Matt and presentation by Emily. Thanks to Leo Lambert Logging, Inc. of Georgetown for sponsoring the lunch at HGTC.



TOUR INTRODUCTION AT HGTC

SCTPA provided each teacher a personalized folder with a SCTPA appreciation certificate, SCTPA and American Loggers Council stickers, a SCTPA cap and articles and information on professional timber harvesting.

After lunch the group traveled to John Spearman's Tree Farm in Lane for an afternoon tour of John's Certified Tree Farm to see how his forest is managed. John's son, a forester, and the forester who works with



RELAXING AT THE SPEARMAN'S

John provided an informative tour. The group got to relax on the back lawn, talk about the day and enjoy a great meal prepared by John's wife May and their daughter Carolyn. Many questions were asked and answered about what they had seen that day. Then it was back to Georgetown and many gathered outside with me to relax and continue to ask questions and listen to my career stories and my life.

Tuesday morning it was off to the Canfor Southern Pine sawmill in Conway where Davis McGowen, wood procurement manager and his team provided a great tour



CANFOR SAWMILL INTRODUCTION

of the sawmill facilities and explanations about the lumber manufacturing process. Thanks to Canfor for sponsoring the lunch at the sawmill.

The tour headed back to Georgetown and met up with Resource Management Services' (RMS) Joey Ferguson and Jay Phillips for a great tour of their KILLSAW property outside of Georgetown. Dan Scheffing, retired Westvaco forester, teamed with Joey to explain reforestation and how RMS intensely manages their forestland for maximum returns.

The group visited Rickey Patterson, Patterson and Son Construction's site preparation operation and Rickey and his son explained their operation for RMS properties for reforesting a tract. Thanks to Rickey, a SCTPA reforestation contractor member, and his team for the demonstration of the specialized bulldozers



JOEY EXPLAINS SITE PREP OPERATION

equipped with V-blades used for their site prep work.

Stops were made to explain the reforestation process in the successional growth and development from newly bedded and planted with enhanced seedlings to mature timber. Joey and Dan did a great job of explaining the intense sustainable process on RMS lands.



NEWLY BEDDED & PLANTED SITE



RMS 5-YEAR-OLD PINE STAND

The last stop on the RMS property was at the

timber harvesting operations of T & D Logging, Inc. and Young Bros., Inc. both of Georgetown. Jay Phillips, RMS Harvesting Manager explained the two operations operating side by side on two tracts. T & D Logging was thinning a 22 year old stand and Young Bros. was final harvesting the stand next door. Jay explained the two operations and the logging equipment being used on



JAY EXPLAINS LOGGING OPERATIONS

each jobsite. The teachers got to see the equipment in action with trees being felled, skidded to the deck and trucks being loaded to go to various markets. Due to the time shortage, the teachers were not able to climb aboard the equipment, but did get a great demonstration of professional logging. The teachers were amazed at how mechanized and productive the crews were all the while caring for the tract. Thanks to T & D Logging and Lewis Young and his son Doc for allowing the group to see professional logging.



JAY EXPLAINING THE FELLER BUNCHER

Back on the bus the tour headed to the RMS office and shed outside of Georgetown for an evening of relaxation and a great meal. Thanks to Resource Management Services for sponsoring the supper. After supper it was back to Georgetown for some to take a dip in the pool and gather for our evening conversations.



YOUNG BROS., INC. DECKING AREA

Another early start on Wednesday morning as the tour headed to Black River Cypress Preserve

outside Andrews for a morning of Project Learning Tree activities. Matt and Beth did a great job with the activities and the teachers had a fun time doing some outdoor learning such as learning how to measure trees and cruise timber with a Biltmore stick. Thanks to White Oak Forest Management, Inc. for sponsoring the lunch at the Preserve.



MATT DOES PLT ACTIVITY AT BLACK RIVER CYPRESS PRESERVE

The tour headed to Georgetown to join up with International Paper's (IP) Justin Demiter, Fiber Supply Manager, for the IP paper mill. The group could not tour the paper mill due to protocols being in place, but did receive a presentation of the paper making process and made a tour of IP's woodyard to see how the roundwood and wood chip trucks were weighed and unloaded and learned how the wood moves through the woodyard process into the paper mill.



IP'S JUSTIN DEMITER ADDRESSES TEACHERS

The tour headed to IP's satellite woodyard located south of the mill for an evening at the IP Cabana located on the water holding pond. The water is used to wet the wood storage rows to keep the wood fiber moist until it is moved up to the mill. There they were treated to seeing an alligator in the pond and had a great meal. Justin and the woodyard manager explained the woodyard operations. Thanks to International Paper for sponsoring the supper. Back to the motel we went for another evening of questions and answers and stories.

Another early start on Thursday as the tour headed to McClellanville to the Buck Hall Recreation Area on the U. S. Forest Service Francis Marion National Forest. The U.S. Forest Service team provided a driving tour in vans supplied by Horry-Georgetown Technical College to see how public

(Continued on page 4)

(Continued from page 2)

forestlands are managed. They got to see and understand the differences in forest management goals between private, commercial and public lands. Thanks to Sabine & Waters, Inc. for sponsoring the lunch at Buck Hall Recreation Area and the HGTC forestry students who drove the vans on the Francis Marion visit.

Then it was back to Georgetown for a stop at HGTC for the teachers to hear about the college's forestry and other programs, tour some of the facilities and hear from current forestry students and past graduates from HGTC. After this stop it was back to the motel to clean up for the sponsors' supper at the Hobcaw-Barony Recreation Pavilion.

The supper is to allow tour sponsors to come and let the teachers thank them for their tremendous support. Teachers were given the opportunity to talk about what they had seen and learned during the week so the sponsors would have appreciation for the efforts. I was the master of ceremonies and it was a great pleasure to do that. The sponsors and teachers introduced themselves as the evening got started.



GEORGE CHASTAIN SPEAKS ABOUT HOBCAW

George Chastain, Hobcaw-Barony Director and two of their researchers did presentations about Hobcaw and explained the research purpose for forestry, wildlife, marine and marine biology and so much more.

It was my great pleasure to introduce the Honorable Joe Young of Georgetown. He's retired from the logging business, but most importantly was a co-founder along with Dean Carson, retired SC Forestry Commission forester, of the SC Sustainable Forestry Teachers Tour. I explained Joe's history and the accolades he has received over the course of his 50-plus year career. Joe explained a little of the tour's history and about his career and thanked the teachers for what they do and for being on the tour.



JOE LEADS GOD BLESS AMERICA

He led the group in the singing of God Bless America. It was great to have Joe join us and thanks to him for his significant contributions to the industry and the tour.

Last day Friday and the group was able to sleep in a little longer. Everyone checked out of the motel and headed to the RMS office and shed for the final wrap up, final presentations and time to work on their final project. A presentation on engineered wood products which is normally Dean Carson's thing, but since Dean wasn't with us, I gladly tried to do his part. Emily and Beth made presentations to finish their parts of the tour.



CRAD DISCUSSES ENGINEERED WOOD PRODUCTS

I was glad to make the closing remarks to express to them how much I appreciated them and how much the tour means to me personally and to our entire industry. As I related, this was my 23rd tour and it is always a big highlight of my year.

I talked about "we're not cutting all the trees" as many perceive because to many people perception is reality and is skewed by receiving misleading information. That perception is based on the simple lack of knowledge and the belief of what they hear and think they see and not the real facts about sustainable forestry. Personal experiences were related where I had encounters with people that didn't know and took the opportunity to explain our industry.

As I told them on Monday, they would witness and feel the passion our industry's professionals have for our industry segments and asked did they see and feel that passion. And the overall reply was a resounding "YES."

The teachers were told, now you are stakeholders in sustainable forestry. You now have the knowledge, facts, science and I challenged them to go forth and preach the gospel and be advocates for sustainable forestry and our industry. As I related, never miss an opportunity to educate someone about our industry.

The teachers began the tour with basic knowledge from their pre-tour work, but now have a deeper appreciation and more knowledge about our

(Continued on page 5)

(Continued from page 4)

industry, its people and the jobs they perform as professionals is a sustainable industry and as stewards of our forest resources.

As usual the one line I heard often during the week was “I had no idea.” Now they do have a greater idea and can be advocates as stakeholders in sustainable forestry, timber harvesting and forest products industries.



TEACHER WESLEY GREY TALKS ABOUT THE WEEK

This group was a fun bunch. I personally thank them for their engagement each day and getting to know each one and having the opportunity to provide my knowledge and experience, and plenty of fun stories, of my 45 year career. I told them for all the evening hanger outers with me, they were official participants in the Teachers Experience Evening Evaluation Committee. It is a great pleasure to see the teachers began and end the tour and how they absorbed the information of the tour stops and presenters.

SCTPA is a proud SC Sustainable Forestry Teachers Experience sponsor and participant. Thanks to all the tour site cooperators and the wonderful sponsors and host of forest products companies making the teachers experience so meaningful.

Again a great week's teachers experience. Thanks guys... Y'all were awesome



TEACHERS EXPERIENCE EVENING EVALUATION COMMITTEE



OUTSIDE PLT ACTIVITY



RMS THINNED STAND



MEASURING TREES



TAMI SICKLES & LOG ON TUMBLER





Letter# : G-1388
Content Type : Sales Programs
Posted Date : 11/24/2020
Effective Date : 11/24/2020
Expiration Date : 10/31/2021

APPLICABLE TO UNITED STATES DEALERS ONLY

American Loggers Program 2021

International Truck, a *Silver* sponsor of the American Loggers Council, committed to enhancing the logging profession, is pleased to announce our American Loggers Purchase Program for 2021. This program is open to all individual and state members, a coalition of state and regional logging associations made up of approximately 30 states across the U.S. Through this program, your customers can order International® trucks without having to spend time and money to go through a bid process. Use this program to help drive incremental sales through your dealership to American Logger professionals across the country.

Program Guidelines

- **Eligible Models:** International® CV™, MV™, HV™, and HX™ models.
- **Eligible Customers:** Customer must be a member of American Logger's Council
- **Program Administration:** Request via **SPA** and reference program in comment section of SPA and must include American Loggers as the Pricing Customer (822447).
 - **New Sold Orders: Request via SPA**
 - **Ordering Period:** November 24, 2020 through October 31, 2021
 - **Production:** All orders under this program must be built by December 31, 2021
 - Vendor Option or Spread production available
 - **Price Pages:** July 2020 price pages.
 - **Floor Plan Terms:** Standard Terms
 - **Non-cancellable**
 - **Existing Stock: Request via SPA**
 - **Price Pages:** Units delivered from stock inventory retain price page guarantees.
 - **DTU Requirements:** Units must be delivered to Customers (DTU'd) by June 30, 2022
- **Program Incentives:**
 - **Customer Rebate:**
 - **CV™ Model:** \$1,000 Customer Rebate
 - **MV™ and HV MRD Models:** \$2000 Customer Rebate
 - **HV HDD Models:** \$3000 Customer Rebate
 - **HX™ Models:** \$4000 Customer Rebate
 - ♦ Every member that purchases an HX model will also receive a special Carhartt Jacket = \$150 value
 - ♦ Every Sales Representative that **sells** an HX model will receive a special Carhartt Jacket = \$150 value

Contact Information

Please contact your local Vocational Sales Manager, Truck Sales Manager or CSA with any questions.

General Provisions

1. Current orders in the system cannot be cancelled and reordered under this program.
2. Transit time per Sales Policy 'New Truck Floor Plan Terms and Note Settlement Procedures'.
3. All program units are subject to any additional surcharges, tariffs, or government mandated price changes.
4. All orders placed are subject to freight/destination charges in effect at the time of order. Please see Product Pricing Letter [G-781 Prepaid Destination Charge Program – July 15, 2019](#) for more information.
5. The upfront SPA, terms, and any applicable Invoice Credits will be applied at time of invoice.
6. All units ordered under this program are non-cancelable.
7. Slots and associated pricing cannot be used for Idealease.
8. Program incentives may not be combined with any other national incentive or rebate programs offered through Navistar, Inc.
9. Sales Program orders are only for delivery to end-user customers domiciled inside the United States. Any units delivered inside the United States initially, then later exported outside the United States will be subject to the terms and conditions spelled out in International's Export Policy Letter G-1860A, up to a full reversal of all incentives.
10. Navistar, Inc. reserves the right to cancel or modify this program at any time. All sold units ordered prior to program cancellation or modification will be honored under the original program provisions. Units ordered under this program cannot be cancelled or substituted with another order. Units currently on order cannot be cancelled and reordered under this program. Incentives cannot be combined with any other program or promotion unless specifically offered by that program. No modification to program incentives or substitution for program incentives will be allowed.

REBATE PROGRAM

International Truck is pleased to offer the following Purchase Program for members of the American Loggers Council.

November 30, 2020 through October 31, 2021

REBATES:

CV Model: \$1,000

MV Models with Cummins: \$2,000

HV Models with Cummins: \$2,000

HV Models with A26: \$3,000

HX Models with A26 or X15: \$4,000



Member must be in good standing with American Loggers Council, or State Logging Association.

There is no limit on number of times rebate can be used.

Rebate is set up for dealer to apply rebate to final price of unit at time of delivery (provided membership is validated).

Members that buy an HX, will get a Carhartt Jacket with new HX Logo. Mark Netzly and Bob Mann will be the point of contact for the program for Navistar.

****Email americanlogger@aol.com for verification or additional information.***

PALMETTO STATE INSURANCE AGENCY, LLC

- Workers Compensation
- General Liability
- Business Auto
- Equipment
- Property Umbrella
- "Distressed Auto"
- And more...

Programs for:
Logging, Trucking, Foresters, Sawmills,
Construction, Farms & Agribusiness



Circle of Excellence Partner
BITCO INSURANCE COMPANIES

BEST COVERAGE IN THE WOODS
803-785-7742

P.O. Box 967, 141 Charter Oak Rd.
Lexington, SC 29071 www.PSIAgency.com



"Let the Sawdust Fly"

A Successful Local Radio Show in Northern MN

About Logging and Forest Management

By Tim O'Hara, Forest Resources Association Vice-President of Government Affairs, & Manager, Lake States Region



A British voice sounds off the names of trees. Among them are "the larch, the fir, the mighty scots pine, the smell of fresh cut timber, the crash of mighty trees," followed by the musical lyrics of Monty Python's "Lumberjack Song."

♪ *I'm a lumberjack, and I'm ok*

I sleep all night and I work all day ♪

These lyrics have become the theme song that plays on every episode of "Let the Sawdust Fly," a local radio show hosted by Peter Wood on the show "SOUND OFF with Brad Bennett." "Let the Sawdust Fly" has aired monthly since 2016 on WDSM 710 AM from Duluth, MN.

Peter Wood, a third-generation logger who resides in Cotton, MN, describes logging as a hidden industry. "One of the things that makes it a hidden industry is that the normal logger doesn't want to come out and talk to the public," said Wood. In that respect, Peter Wood describes himself as an abnormal logger. He wants to talk to people. He wants people to understand more about logging, forest management, and the value of the forest products industry. "I talk about what really goes on, and I do it in a positive light," said Wood. "Because I want people who are sipping coffee and see a pulp truck pass by or people who go home and grab a toilet paper roll to understand how it got there." Wood now has a platform to talk about the logging and the forest products industry through the airwaves and podcasts.

Since its inception, "Let the Sawdust Fly" has become one of WDSM's top-rated features and podcasts. This is not bad considering that Wood just wanted to get on the radio and talk about his profession to the public. Wood thought it would just be one show, and then he would be done. After his first show, the show's host Brad Bennet said he learned so much about the industry and invited him back.

Many episodes later, Wood has no shortage of topics to discuss. Peter Wood is on a mission, and he will not stop talking about logging and forest management if people are willing to listen. "I thought it would be boring after a few months, and nobody would want to listen," said Brad Bennet. "But it's been the opposite. Peter does a great job of bringing the new guests on each month; people that have different connections to the logging and trucking industry. It's been very insightful."

As for Wood, he will continue to educate people, as he has always done, about our industry on the airwaves or in general conversation with friends or strangers. It is something he enjoys. According to Wood, "there are two types of people, those who oppose logging and those who have been educated about logging." Wood has a passion for the latter. Sun Country Highway Sun Country Highway "SOUND OFF with Brad Bennett" airs each weekday from 8 to 11 AM on WDSM 710 AM and 98.1 FM from Duluth. "Let the Sawdust Fly" is featured on the last Wednesday of each month at 9:05 AM.

Portions of this Woods to Mill Blog were taken with permission from an article written by Fred Williston for the Lakeland Times & North River News "Logging & Forestry." Spring/Summer 2021, issue.

We Specialize in:
Trailers - New & Used
Service Department
Parts - We Ship Anywhere



Locations in:
Wilmington, NC
Spartanburg, SC
St. George, SC



www.pinnacletrailers.com

Inventory Arriving Daily!

Call Today 800-513-9373

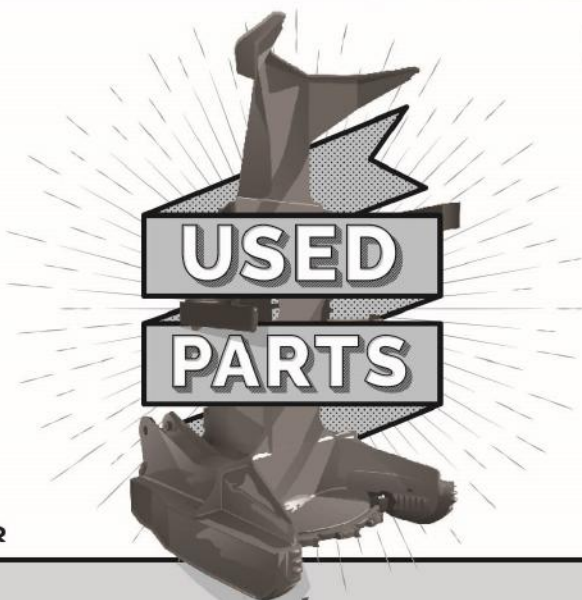
New location in St George, SC—near Charleston !



**WE WERE LOGGERS FIRST.
SO WE PUT LOGGERS FIRST.**

We are a **PROUD SUPPORTER** and **ALLIED SUPPLIER** of the **SCTPA**. Trusted for over 45 Years, We started with one mission. A commitment to keep logger's operations running strong by providing quality used logging equipment and parts at **FAIR PRICES**. Nothing has changed since **DAY ONE**.

STAY UP TO DATE ON INVENTORY & SPECIALS
[FACEBOOK.COM/WWTRACTOR](https://www.facebook.com/WWTRACTOR)



**LATE MODEL DISMANTLED
FORESTRY MACHINES**

CATERPILLAR

525Ds 535Ds // 525Cs 535Cs 545Cs
563Cs 573Cs // 559Bs 559Cs

JOHN DEERE

648Ls 748Ls // 437Cs 437Ds
643L 843Ls // 643Ks 843Ks

TIGERCAT

620Es 630Es // 720Es 720Gs
718Es 724Es // 845D

**USED PARTS FOR MOST
BRANDS AND MODELS!**

**OVER
13
ACRES**

THE SOUTH'S
LARGEST *Used Parts* **INVENTORY**

VIEW MORE EQUIPMENT
AT OUR NEW WEBSITE
WWTRACTOR.COM
INFO@WWTRACTOR.COM



VISIT OUR YARD
1418 OLD HWY 52 SOUTH
MONCK'S CORNER, SC 29461
843 761 8220

**OVER
45
YEARS**



CONWAY, SC
(843) 397- 9400

WALTERBORO, SC
(843) 538-3122

NEWBERRY, SC
(803) 276-8030

POLKTON, NC
(704) 272-7685

ELIZABETHTOWN, NC
(910) 247-6391

Serving South Carolina for
over 70 years with quality
Forestry equipment, parts
& service.

Tidewater Equipment Company

"We Know Loggers"

Tigercat
Tough • Reliable • Productive

PROUD SUPPORTERS OF THE
SOUTH CAROLINA TIMBER PRODUCERS ASSOCIATION





2021 Western Star Association Rebate – US ALC Associations

Western Star is proud to support the American Loggers Council (ALC) and its affiliates through the extension of the association rebate program. Dealers can apply the rebate to the truck purchase or process a direct rebate to the customer. ALC Members may qualify for a rebate when they purchase a brand new Western Star 49X or 4900 logging service truck, the leading brand in the logging industry.

Rebate amount:

- \$3,000 for 49X or 4900 model with vehicle service code of A85-012, Logging Service

Requirements:

- **Valid only on vehicle service data code of A85-012, Logging Service.**
- **Valid only on StarQuote pricing.**
- **Not valid with stock truck concession or other program incentive claims.**
- Verification of membership or affiliation status with ALC.
- Association membership must be valid for at least **90 days prior** to retail sold date.
- Trucks must be **new** and never been retail sold regardless of model year or mileage.
- Maximum of **two (2)** trucks per customer/company in a calendar year.
- Rebate claim must be processed within **30 days** of retail sale date.
- No gliders or used trucks are eligible.
- Only one association rebate can be applied per claim per truck.

Process:

1. Association member advises dealer they are a member of the American Loggers Council or affiliate organization, and asks dealer to verify membership with ALC.
 - To verify membership, dealer needs to contact Mr. Scott Dane, American Loggers Council via e-mail scott.dane@amloggers.com at or by phone at 218.780.5927.
 - Please identify yourself as a Western Star Dealer requesting approval to offer a discount to the customer. Provide applicant name, organization, and membership number, if applicable.
 - Mr. Dane will verify and provide you with an approval. He will also send a copy of the approval to WST-Training@Daimler.com
2. Association member purchases up to **two (2)** new trucks, per customer/company in a calendar year.
3. Dealer report and enter the retail sale date and warranty registers the truck(s).
4. Dealer submits a TIA using request type, Trade Association/Sales Rebate category

- *If Association does not have a membership list or number, proof of membership (i.e. Membership Card or Membership dues receipt) must be attached in TIA system.*
- 5. Dealer submits Rebate Claim Form through DTNA Portal
- 6. Association membership and truck sale are verified before TIA is processed.
- 7. Dealer can apply the credit as requested by the customer/member:
 - Dealer credits customer's parts/service account with full rebate amount.
 - Dealer pays the customer full rebate directly.

Dealer is responsible for ensuring all conditions of this program and Association memberships are met. TIA's will not be approved if any condition or Association memberships are not in accordance with this program.

Western Star Trucks reserves the right to terminate this program at any time without notice. Transactions submitted and approved for this offer are subject to audit at any time. Western Star reserves the right to charge back any incentives provided if it is discovered that the transaction does not fully meet the program requirements.

For questions, please contact WST-Training@Daimler.com

Congressman Westerman's Statement on Incoming USFS Chief

Washington, DC / June 28, 2021 -



The U.S. Forest Service (USFS) announced Randy Moore as the new USFS chief. Former Forest Service Chief Vicki Christiansen will retire at the end of July after more than 40 years as a professional forester, wildland firefighter and land manager. House Committee on Natural Resources Ranking Member Bruce Westerman (R-Ark.) issued the following statement in response:

"As a forester myself, I'm very familiar with the challenges facing American forestry and the need for a seasoned professional to lead the USFS. Mr. Moore is bringing new experiences and ideas to the table, and I sincerely hope we can work together on mitigating catastrophic wildfires, opening up our national forests to sustainable lumber harvesting, making forests more resilient against insects and diseases and much more. I'd also like to thank Ms. Christiansen for her years of dedicated service and thoughtful investment in forests, both in my district and across the country. We have an incredible responsibility to steward these rich resources well, and I look forward to creating solutions together."

About Randy Moore

Moore has been serving as Regional Forester in the

Pacific Southwest Region in California since 2007 where he has responsibility for 18 national forests, covering one-fifth of the state on 20 million acres of land. Additionally, he oversees State and Private Forestry programs in Hawaii and the U.S. affiliated Pacific Islands.

Previously, Moore served as the Regional Forester for the Eastern Region headquartered in Milwaukee, Wisc., for five years.

Moore started his career in conservation in 1978 with USDA's Natural Resources Conservation Service in North Dakota. His Forest Service career began on the Pike and San Isabel National Forests in Colorado and the Comanche and Cimarron National Grasslands in Kansas. He served as Deputy Forest Supervisor on the National Forests of North Carolina and the Mark Twain National Forest in Missouri before serving as Forest Supervisor of the Mark Twain National Forest. Moore also has national-level experience in Washington, D.C., serving as acting Associate Deputy Chief for the National Forest System and the National Deputy Soils Program Manager.

Moore earned a bachelor's degree in plant and soil science from Southern University in Baton Rouge, Louisiana. He and his wife Antoinette have two sons, a daughter-in-law, and two grandsons.

Pelzer,
South Carolina
888-641-6058

Interstate

TIRE SERVICE

K516 Model,
11R22.5 30/32nds - \$280 Ea*

K516 Model,
11R24.5 30/32nds - \$310 Ea*

All Tires Are →
Smart Way Approved

ah13rn

ag57dh

K216 Model
295/75R22.5 • 19/32nds

←
All Tires Are
Smart Way Approved
\$275 Each*

*While Supplies Last

WELCOME NEW MEMBERS

SCTPA welcomes our New Members & Restart Members.

Harrison Timber Products, Inc., Round O
BBB Trucking, LLC, Ulmer
Campbell Forest Products, LLC, Pamplico
Poultry Services, LLC, Little Mountain

Dedicated representation & service to the professional timber harvesting segment of South Carolina's forest products industry.



As We See It ...

American Loggers Council Provides a Great Return on Investment

First and foremost, when the logging industry is successful, all other sectors of the forest products industry succeed. Without a healthy and stable logging and trucking industry the rest of the supply chain is compromised as well as public and private forest management efforts. That is why all sectors of the timber and forest products industry need to be partners with the American Loggers Council.

The American Loggers Council is primarily comprised of 30 state associations. The average annual dues from these organizations is \$5,000 per year. Aside from the national representation and the “strength in numbers” an example of the return on investment can be demonstrated by the value of the ALC Truck Rebate Program. This program provides a direct monetary benefit annually of approximately \$500,000 for the loggers and truckers that are members of state associations participating in the program. To learn more about the ALC Truck Rebate program visit www.amloggers.com/rebates. These truck rebates range from \$2,000-\$4000 depending on the manufacturer and model. One \$4,000 truck rebate nearly pays for the average state association ALC annual dues and is typically 10 times the state association membership dues paid individually by loggers and truckers.

The American Loggers Council was instrumental in securing the \$200 million Pandemic Assistance for Timber Harvesters and Haulers (PATHH). Based on simple math each timber producing state would receive approximately \$5 million for loggers and truckers that qualify. This is a return on investment for the states that are members of the American Loggers Council, based on annual dues average of \$5,000, of 1000%!

The American timber industry is more than just loggers and truckers – it takes equipment manufacturers, insurance services, fuel vendors, parts suppliers, tire companies, financial institutions, other associations, landowners and land managers. Working together the timber industry can be more effective and successful.



Scott Dane
ALC Executive Director

In order to broaden the partnerships and support, the American Loggers Council has developed the Associate Membership category that will allow for membership opportunities for manufacturers, timber consumers, suppliers, other organizations and landowners at various levels. To learn

more, and become an Associate Member of the American Loggers Council, visit the American Loggers Council website at www.amloggers.com or by e-mail at scott.dane@amloggers.com

Additionally, the American Loggers Council has a logger / trucker individual membership option if you are not a member of a state association, or in a state that does not have a state association. These levels of membership range from \$100-\$400 per year. However, the American Loggers Council supports our state association members and encourages all loggers and truckers to become members of their state associations.

All business investment must be weighed against the return on that investment. The American Loggers Council has proven that the Return on Investment of membership, support and sponsorship provides a direct positive impact to loggers and truckers, and the timber industry as a whole. Join today and invest where it makes a difference.



For Media Inquiries Contact:

Danny Dructor
American Loggers Council
Phone: 409-625-0206

E-mail: americanlogger@aol.com

FOR RELEASE - Immediately

Scott Dane to Become Next Executive Director for the American Logger Council

May 10, 2021, Hemphill, TX—On June 1, 2021, Scott Dane will officially become the next Executive Director for the American Loggers Council (ALC), replacing the retiring Danny Dructor who has been with the ALC since July of 2001.

Mr. Dane brings with him a vast amount of experience working with timber harvesting and timber hauling associations having been the Executive Director for the Associated Contract Loggers and Truckers of Minnesota for the past seventeen years.

Scott has experience in State and National issues impacting the timber harvesting and timber hauling issues at both the State and National level and has been a critical component of the ALC's work to gain financial assistance for those businesses impacted by the COVID-19 pandemic as well as legislation allowing State legal weight tolerances on the Federal Interstate Highway System and allowing the 16 and 17 year old sons and daughters of logging business owners the legal right to work with their parents in their family-owned businesses much like both farmers and ranchers can do under current labor laws.

Participating in activities and legislation related to the federal timber sale program and forest restoration projects will also keep Scott busy as he continues to represent the issues and concerns of those ALC members who are dependent on a viable federal timber supply and a federal forest restoration program

Tim Christopherson, President of the ALC states, "After close to 18 months of searching for a new Executive Director for the ALC, the search committee was able to narrow down the field to one candidate. I am pleased that Scott has accepted the position and look forward to working him during the transition. He has the drive, passion and ambition to take the ALC to the next level."

Scott Dane commented, "Danny has provided the leadership to develop the American Loggers Council into the leading national voice of the American logging industry. I look forward to continuing to build upon that foundation, expanding the partnerships, supporting the state members with their issues and promoting the agenda of the American Loggers Council."

The ALC office will be relocated from Texas to Minnesota where Scott will set up the office beginning June 1, 2021.

The American Loggers Council is the only national organization solely dedicated to representing the independent contract logger on the national level. We have the combined forces of independent contractors and state and regional logging associations, as well as our many sponsors around the country to impact our industry positively and pro-actively by sharing the benefits of education and training opportunities, networking, research, promotion and legislative coordination. The Council is committed to enhancing the logging profession, establishing a more level playing field for professional loggers and providing accurate information about the logging profession to the forest products companies, landowners and the public. It serves as a national network and communication center, linking local, state and regional organizations around the country.

AMERICAN LOGGERS COUNCIL (ALC) PROGRAM DETAILS



Peterbilt is pleased to offer the American Loggers Council (ALC) the following rebate incentive:

Program Details:

- Members receive a \$2,000 **CASH** rebate on Models 567, 367, or 365.
- Limited to three (3) rebates per member for calendar year 2021.
- ALC members must be in good standing for at least 90 days prior to taking retail delivery.
- ALC members must take retail delivery between **January 1, 2021** and **December 31, 2021**.
Retail delivery is defined as the time the ownership of the truck is transferred from the Peterbilt dealer to the customer.

Other Details:

- Request for customer rebate incentives must be **received by ALC** within 90 days of taking retail delivery.
- Allow 6 to 8 weeks for check to process.
- This program may not be combined with any other rebate offers from Peterbilt.





FORESTRY MUTUAL

forestrymutual.com

INSURANCE COMPANY

Setting the

STANDARD

Is what sets us apart!

*Celebrating over 50 years providing affordable WORKERS' COMPENSATION Coverage
Specializing in the FOREST PRODUCTS INDUSTRY*

TOLL-FREE 800-849-7788

CONTACT ANY OF OUR AGENTS TODAY FOR A QUOTE!

Eddie Campbell: (919) 770-6132

Greg Hutson: (843) 324-4728

Nick Carter: (803) 669-1003

Chris Huff: (919) 810-9485

Alan Schaefer: (912) 414-9778

Jack Williams: (601) 760-0011



PROVIDING COVERAGE IN GA, MS, NC, SC, TN & VA

Release

from the South Carolina Forestry Commission



FOR IMMEDIATE RELEASE:

Tuesday, May 25, 2021

CONTACT:

Holly Welch
SCFC Environmental Program Manager
(803) 667-0815
hwelch@scfc.gov

SCFC establishes Temporary Logging Bridge Rental Program

The South Carolina Forestry Commission (SCFC) has established the **Temporary Logging Bridge Rental Program** in an effort to enhance the Best Management Practices (BMPs) for Forestry program and help protect the waters of South Carolina. The Commission has acquired four sets of steel bridges that are available for rent by adequately insured contractors for forestry-related ditch or stream crossings.

There are two types of bridges available – A 4-foot-wide set made up of three 4-foot by 30-foot bridge sections and a 6-foot-wide set composed of two 6-foot by 30-foot bridge sections. The rental fee for either set is \$50 per week, with a \$200 deposit required at the time of rental. The deposit amount will be returned or applied to the bill upon satisfactory completion of the rental period.



Log truck utilizes a temporary steel bridge to cross a perennial stream.

The bridges are located at the SCFC offices in Walterboro and Columbia. SCFC personnel will load the bridges onto contractors' trailers, but they must be secured and transported by the contractor.

In order to rent the bridges, the contractor must possess or obtain:

- workmen's compensation insurance coverage for its own employees;
- public liability insurance with limits of \$1 million for the injury to or death of one person, and \$2 million for the injury to or death of more than one person;
- property damage insurance with limits of \$1 million arising out of a single accident and \$2 million for damage to the property of third persons.
- an insurance certificate verifying coverage and identifying SCFC as an additional insured entity is required.

To request more information or to reserve a set of bridges, please contact SCFC Environmental Program Manager Holly Welch at (803) 667-0815 or hwelch@scfc.gov.

###

The mission of the South Carolina Forestry Commission is to protect, promote, enhance and nurture the forest lands of South Carolina in a manner consistent with achieving the greatest good for its citizens.

South Carolina Forestry Commission • 5500 Broad River Road, Columbia, South Carolina 29212 • www.trees.sc.gov

VERIZON CONNECT FLEET SCTPA MEMBER PROGRAM



SC Timber Producers Association is partnering with Verizon Connect Fleet to offer a Member Benefit Program for GPS and On Board Camera Systems. This program offers members the opportunity to purchase GPS and On Board Cameras at member pricing which may be less than other companies offering similar technologies.

Verizon Connect Fleet has multiple service platforms for GPS technologies for tracking trucks and equipment. Several On Board Camera technologies are offered as well.

GPS and On Board Camera Systems for a business vehicle fleet can increase safety of fleet operation, used as a training tool and assist in possibly reducing potential liability risks.

Active SCTPA members are eligible for the Verizon Connect Fleet Program. Members may contact the SCTPA office for member information, member period and member number, to provide Kevin Schwartz, Fleet Management Consultant, at Verizon Connect Fleet to verify active membership.

Contact Kevin Schwartz at Verizon Connect Fleet for information regarding their products.

Kevin Schwartz
Fleet Management Consultant
5821 Fairview Road, Suite 401
Charlotte, NC 28209
Mobile – 419-356-7529 Office – 704-967-8401
Kevin.Schwartz@verizonconnect.com



Reminder: SCDOT Temporary Logging Entrance Blanket Encroachment Permit in Effect

The SCDOT Blanket Encroachment Permit is now in effect for Temporary Logging Road Entrances. SCDOT requires an encroachment permit anytime there is travel or work done across and/or in the state owned road right-of-way. The encroachment permit assists SCDOT to know where the access is located and what kind of activity or work is being conducted. SCDOT can provide assistance as needed to make sure the access is located at a safe location for traffic and sight distances in both directions. The Blanket Logging Road Encroachment Permit is required to be located at the jobsite.

SCDOT worked with SC Timber Producers Association, Forestry Association of SC and the SC Forestry Commission to develop the blanket temporary logging

road access encroachment permit. The blanket encroachment permit is an annual permit and there is no fee charged. This development was due to some operations not having, not knowing about and not constructing temporary logging road accesses in the correct manner to allow for proper drainage along the road, safe access locations and reduce damage being done to the state owned right-of-way.

The blanket permit can be accessed on the SC Department of Transportation's website. The web address for encroachments permits is <https://www.scdot.org/business/permits.aspx>.

Blanket permits are only accessible for users with an account. Therefore, the first part of the process is to generate an account. Initiate the process to create an account by clicking on the appropriate link on the bottom left of the Encroachment Permits page labeled Request an Account. Once an account is established you would come back to the site and log into the Existing Customers on the right side of the page. Once logged in select the blanket permit for logging entrance as the permit type. There are tutorial videos at the bottom of the internet page that can be helpful.

SCDOT requires an encroachment permit for any activity on or across a state owned road right-of-way.

Verizon Connect Fleet and Asset Workforce Management

Kevin Schwartz
Fleet Management Consultant

Verizon Connect
5821 Fairview Road
Suite 401
Charlotte, NC 28209
Kevin.Schwartz@verizonconnect.com
M 419-356-7529
O 704-967-8401

Fleet management

Use one interactive, easy-to-navigate screen to see all vehicles and crews. Report on critical behaviors and compliance.



Increase visibility and efficiency

- Manage ELD compliance
- See vehicle and driver location on a live map
- Know when vehicles are moving or running outside of normal hours
- Instantly find the nearest vehicle at any given time
- Report on fuel efficiency and charges
- Track off-highway vehicle mileage
- Receive DVIR alerts

Help improve safety and reduce liability

- Monitor driver behaviors like speeding and harsh braking
- Set up safety alerts and review driver scorecards
- Help protect against false incident claims

Streamline processes and navigation

- Track and create automated maintenance plans
- Help optimize delivery routes and provide navigation to and from job sites

Asset management

Improve equipment utilization, report on engine hours and help reduce asset loss and theft.



Track asset utilization and generate reports

- Quickly and accurately report on asset use
- Track equipment fuel use and unproductive idling
- Collect data and report on engine hours
- Link existing OEM-installed hardware through AEMP connectors

Provide more accurate billing and increase utilization

- Provide more accurate invoices for equipment rentals
- Better use existing resources with improved location data
- Build geofences around key business locations to track asset movement

Go beyond the dash cam with Integrated Video

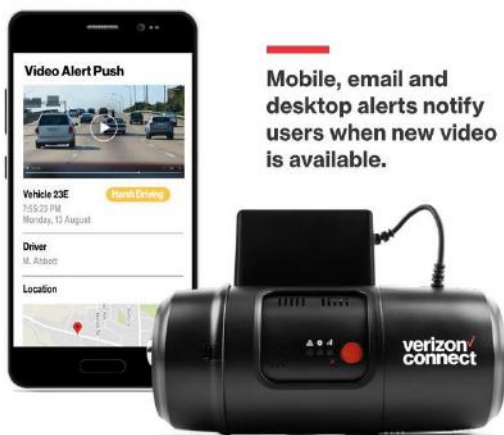
HD video, AI and driver data join forces to help you coach drivers and mitigate risk.



When driving is a large part of your business, it's important to have context for unsafe driving incidents and to help protect yourself against false claims.

Verizon Connect Integrated Video brings together high-quality, smart video with the power of a fleet management system to deliver video clips of harsh driving events within minutes of them happening. Our AI engine sorts through video footage, so you only receive relevant clips, while machine learning takes user feedback to help make future videos even more beneficial.

Whether a driver is braking hard, cornering too fast or rapidly accelerating, you'll have the video to better understand the context and be able to take the appropriate action. Plus, that footage flows seamlessly into Reveal, where you can see other fleet data and get the full story.



Mobile, email and desktop alerts notify users when new video is available.



Review video footage within minutes of an unsafe event – no sorting through hours of video



Coach drivers on better behaviors with video replay and downloads



Seamless video transmission into Reveal within minutes



Choose a simple self-install or have our pros do it for you



Request on-demand clips from available video footage



Know right away how severe an event was with harsh driving classifications



Help mitigate accident risk and liability with unbiased footage



Mobile and desktop alerts to notify users when new video is available



A 150° field of view in HD means you see what your drivers see



See vehicle speed while the video plays

verizon[✓]
connect

©2019 Verizon. All rights reserved. 79550_US_0819



Timber Talk

Your Voice for South Carolina Timber Harvesting

Contact Crad Jaynes at
1-800-371-2240 or bcjpaw@windstream.net

WORKING TOGETHER TO MEET THE TRANSPORTATION NEEDS OF THE TIMBER INDUSTRY



Offering Trailer Sales, Finance, Service and Parts

CRTS is proud to be the authorized dealer for Utility, Peerless, MAC, Wilson, Trailstar, Stoughton and Kentucky. We offer one of the largest inventories in the Southeast with new and used trailers of all makes and models. Also, customized spec's are our specialty. Our design engineers can assist you in creating a unit to meet your specific needs.

Utility - Reefers, Dry Vans, Flatbeds, Tautliners
Peerless - Open Tops, Chip Trailers, Live Floors
MAC - Dumps, Refuse Trailers, Flatbeds
Wilson - Hopper Bottom and Conveyor Belt Trailers
Stoughton - Dry Vans
Kentucky - Moving Vans
Trailstar - Dump Trailers

**Call CRTS 800-662-7026
or 919-773-4000
www.crtsinc.com**

"Locations in North Carolina, South Carolina and Virginia"



Commonwealth Trailer Rentals



Offering Trailer Leasing and Rental Programs

CTR offers a wide variety of leasing programs as well as short term rentals for peak season. CTR boasts one of the newest live-floor fleets in the southeast. We also offer late model refrigerated trailers.

**Call CTR 866-839-3495
www.rentctr.com**

CTR LOCATIONS

**MARYLAND - VIRGINIA
NORTH CAROLINA - SOUTH CAROLINA
GEORGIA - ALABAMA - TENNESSEE - FLORIDA**

(Baltimore and Orlando pick up and drop off available)



SENATOR COLLINS URGES AGRICULTURE SECRETARY TO QUICKLY DISTRIBUTE DELAYED COVID-19 RELIEF FUNDING FOR LOGGERS

Washington, D.C., June 17 – At a Senate Agriculture Appropriations Subcommittee hearing, U.S. Senator Susan Collins urged U.S. Department of Agriculture (USDA) Secretary Tom Vilsack to expedite the distribution of COVID-19 relief funding for logging and log hauling businesses.

Last year, Senator Collins and Representative Jared Golden introduced the Loggers Relief Act to establish a new USDA program to provide direct payments to loggers who have been seriously impacted by the pandemic. Senator Collins, a lead negotiator of the COVID-19 relief bill that was signed into law in December, successfully secured the inclusion of the Loggers Relief Act and \$200 million in funding in the final package.

“I know that USDA announced this morning that this program and others would be implemented in the next 60 days. But I would point out that the program was signed into law on December 27. So it has taken nearly six months just for loggers to be told that it could take yet another two months before they actually receive relief,” said Senator Collins. “And given their losses during the pandemic, this is a problem. Is there any way for the USDA to speed up the implementation of this program so that it does not take another 60 days?”

“We will do it as quickly as we can within the resources that we have and within the legalities that we have to follow. Senator, I really appreciate the fact that you feel that this has been delayed, but I think you have to look at all of the other activities and work that we have had to do at USDA,” responded Secretary Vilsack. “And under the circumstances and given the staffing reductions that we faced coming into this administration, I think our people have done a pretty daggone good job of getting things out.”



“I understand and appreciate your folks are suffering, and we will try to get that relief,” continued Secretary Vilsack. “And I know the chair[man] is also interested in this issue. She has probably talked to me about a half a dozen times. So we will make sure that we’ll do it as quickly as we possibly can.”

“Thank you for that commitment. The chair[man] and I worked very closely to get this assistance included,” replied Senator Collins.

In February, Senator Collins and Representative Golden led 19 of their colleagues in sending letters urging the USDA to quickly disburse the relief funding. Additionally, in April, Senator Collins led the Maine Delegation in sending a letter to the USDA to urge the quick distribution of the \$200 million in COVID-19 relief funding for logging and log hauling.

The logging industry has experienced a steep decline in demand for wood fiber since the coronavirus pandemic began, leading to an estimated 20 percent or more drop in the timber harvest this year. The \$200 million in relief funding will go to timber harvesting and hauling businesses that have, because of the COVID-19 pandemic, experienced a loss of 10 percent or more in gross revenue during the period beginning on January 1, 2020, and ending on December 1, 2020, compared to the same period last year. Maine’s logging industry is a linchpin of the state’s economy, generating an estimated \$619 million in economic output and providing \$342 million in income to around 9,000 Mainers, most of whom live in rural communities.

SCTPA Comments: *The latest word SCTPA has heard is that the Logger and Log Hauler Relief Program will be released within the next 45 to 60 days. That is the word from USDA recently, but no formal announcement of the program’s relief has been announced. It is understood there will be a narrow window to apply for relief and there will be a cap on the amount a business can receive. SCTPA will keep everyone posted regarding the program’s release.*

We Specialize in:
Trailers - New & Used
Service & Hydraulics
Parts - We Ship Anywhere



Locations in:
Wilmington, NC
Spartanburg, SC
St. George, SC



www.pinnacletrailers.com

Inventory Arriving Daily!

Call Today 800-513-9373

New location in St George, SC -near Charleston !



LARGEST SALVAGE YARD IN SOUTHEAST



**TRUCK &
TRACTOR INC.**
www.tractor.com



CALL US FIRST FOR ALL OF YOUR USED FORESTRY AND CONSTRUCTION EQUIPMENT NEEDS. WE HAVE BEEN IN BUSINESS FOR OVER 34 YEARS SPECIALIZING IN QUALITY USED LOGGING AND CONSTRUCTION EQUIPMENT. NEW INVENTORY ARRIVING DAILY WITH 100% SATISFACTION ON PARTS!



**1418 OLD HWY 52 SOUTH
MONCK'S CORNER, SC 29461
WWW.WWTRACTOR.COM
843.761.8220**

DISMANTLING DAILY

CAT

515, 525, 525B, 525C, 535B,
545, 320BLI & 322

BARKO

160B, 160B, 275B & 775B

FRANKLIN

3000, 3600, 105, 170, 405,
560, C5000, Q70 & Q80

HYDROAX

411B2, 611B2, 411E, 511E, 611E,
411EX, 511EX, 611EX, 711EX & 570

JOHN DEERE

440B, 540B, 548B, 648B, 648C, 648GII,
648GIII, 748GII, 748GIII, 643, 643D,
643G, 843G, 843H, 653E, 753 & 848

PEERLESS

2770

PRENTICE

210C, 210D, 210E, 310E, 325, 384,
410C, 410D, 410E & 410EX

TIGERCAT

230, 240, 718, 720, 720B, 720C, 720D,
726, 726B, 620, 630B, 845 & 845B

TIMBERJACK

240, 380A, 380B, 450B, 450B, 450C, 460,
460D, 608, 608S, 618, 735, & 850

TREEFARMER

C6D & C7F

Western Star Trucks

This Log Truck Was Born To Be A Log Truck!

Here you won't find any highway trucks being passed off as work trucks. Because we started out building log trucks nearly 50 years ago, which means we understand the demands logging has. Big loads, tough conditions. Not just any truck can take two hundred thousand pounds down a muddy road and keep you safe.

You need trucks that were made for your job. That work just as hard as you do every single day. Trucks with powerful engines and strong transmissions. With a heritage of durability and reliability, backed by unmatched factory and dealer support. And we have a whole family of them that can be built to do whatever you need.

Shealy's Truck Center, Inc. is your Western Star Log Truck dealer located in Columbia, SC.

Contact: David Shealy ■ Office 803-771-0176 ■ Cell 803-467-7605

Jonathan Myers ■ Office 803-744-3711 ■ Cell 864-436-0198.

SC TIMBER PRODUCERS ASSOCIATION ACTIVE MEMBERS CAN RECEIVE UP TO A \$ 2,000 DISCOUNT.



LUMBER PRICES HAVE BOTTOMED OUT, BUT ARE LIKELY TO STAY DOUBLE THE HISTORICAL AVERAGE FOR AT LEAST THE NEXT 5 YEARS, TRADER SAYS

By Emily Graffeo, June 27, 2021, Markets Insider Article

- Lumber has probably found a bottom at current levels, but prices will remain over double the average for the next few years, Stinson Dean told Insider.
- The Deacon Trading founder expects lumber to trade above \$1,000 for potentially the next three to five years.
- He added that the current state of the lumber futures curve confirms that lumber prices have bottomed.

Lumber prices have probably found a bottom at current levels, but will remain higher than average for the next few years, a lumber trader told Insider.

Stinson Dean, CEO and founder of Deacon Trading, expects lumber to trade above \$1000 for potentially the next three to five years. The historical average is around \$400, he said.

"My argument is the new normal is going to be significantly higher than the old normal while others think we're going to go back to pre-COVID price ranges," Dean said.

After an intense run-up in the beginning of the year, Lumber has fallen nearly 50% from May's record high of over \$1,700 per thousand board feet.

"Business has slowed dramatically. There's ample supply. So there's just not pressure on buyers to cover those needs...they've bought enough to cover whatever needs they do have," Dean said.

He added that the current state of the lumber futures curve confirms his take that lumber prices have bottomed out. The curve can give an indication of the health of the underlying supply and demand market, he said.

Lumber futures recently began trading in contango - a situation in commodities wherein the future price is higher than the spot price. For the

past year, the futures curve was inverted and in backwardation, where the future price is cheaper.

The backwardation and subsequent premium on front-month futures occurred because everyone needed lumber as soon as possible, and they were willing to pay whatever price for it, said Dean.

"People didn't care about two months down the road, they only cared about right now because they were in the middle of a short squeeze. They had to get covered," he added.

Now, that dynamic has changed and supply is ample. Dean explained that the futures curve in contango isn't bearish for lumber, but it's not necessarily bullish. It means that supply and demand are normalizing, and an equilibrium is being found.

He expects lumber prices to average around \$900, but remain volatile. Over the next

five years, he sees lumber trading around \$1000. "For the rest of 2021, the phrase I would use is grind higher," Dean added. "I think we'll start trading around above \$1000 this fall and stay there."

Before this fall, he sees prices staying muted until homebuilders begin to expand production and deliver more homes in the next quarter. What partly caused the prices to fall from the peak was that homebuilders began to slow down and lumberyards grew hesitant to lock in future business. Now that homebuilders' near-term needs have been covered, there's less of a scramble for wood.

What partly caused the prices to fall from the peak was that homebuilders began to slow down and lumberyards grew hesitant to lock in future business. Now that homebuilders' near-term needs have been covered, there's less of a scramble for wood.

SCTPA (Crad's) Comments: SCTPA has fielded many questions from friends and family and just folks seen around town whom I know and they know me as a forester and know about SCTPA and

(Continued on page 28)



(Continued from page 27)

our representation and service to the timber harvesting and wood supply segment of the wood supply chain. I had one gentleman I see at the post office fairly regularly say to me, "Hey Crad, I bet your logger guys are loving these high lumber prices." I politely replied and asked him to come over to let me explain the system. I explained how the process works; forest landowners receive a stumpage price for their standing timber...wood suppliers receive a price for supplying the timber to wood receiving markets. Loggers receive a harvest and haul price and the lumber mills place a price on the finished products. My response was..."there is no tickle back impact to the first three links of the wood supply chain." The gentleman was quite amazed at how the system works and commented..."that's really not too fair." I responded to say..."I've been around this industry for 45 years and it's been this way for my entire career." He thanked me for the time and walked off kind of shaking his head. Hopefully I didn't confuse him too much, but I appreciated his interest.

THE WHITE HOUSE PRESIDENT BIDEN ANNOUNCES SUPPORT FOR THE BIPARTISAN INFRASTRUCTURE FRAMEWORK

Washington, DC, June 24, 2021: President Biden and Vice President Harris announced their support for the Bipartisan Infrastructure Framework, the largest long-term investment in our infrastructure and competitiveness in nearly a century – an investment that will make our economy more sustainable, resilient, and just.

The President came into office promising to find common ground to get things done – and he's delivering on that promise.

The \$1.2 trillion Bipartisan Infrastructure Framework is a critical step in implementing President Biden's Build Back Better vision. The Plan makes transformational and historic investments in clean transportation infrastructure, clean water infrastructure, universal broadband infrastructure, clean power infrastructure, remediation of legacy pollution, and resilience to the changing climate. Cumulatively across these areas, the Framework invests two-thirds of the resources that the President proposed in his American Jobs Plan.

President Biden believes that we must invest in our country and in our people, creating good-paying union jobs, tackling the climate crisis, and growing the economy sustainably, and equitably for decades to come. The Bipartisan Infrastructure Framework is a critical step in accomplishing these objectives.

President Biden believes that we are at inflection

point between democracy and autocracy. At this moment in our history, President Biden believes we must demonstrate to the world that American democracy can deliver for the American people. Today, the President is showing that democracy can deliver results. The Framework will position American workers, farmers, and businesses – small and large alike – to compete and win in the 21st century.



Still, there is more work to do – to grow our economy, create jobs, improve living standards, reduce climate pollution, and ensure more Americans can participate fully and equally in our economy. President Biden remains committed to the comprehensive agenda laid out in the American Jobs Plan and American Families Plan.

He will work with Congress to build on the Bipartisan Infrastructure Framework in legislation that moves in tandem, and he is encouraged that both the House and Senate are working on budget plans that would do so.

But democracy requires compromise. The historic Bipartisan Infrastructure Framework will make life better for millions of Americans, create a generation of good-paying union jobs and economic growth, and position the United States to win the 21st century, including on many of the key technologies needed to combat the climate crisis. That's what President Biden and Vice President Harris were elected to do.

The President calls on Congress to pass the Bipartisan Infrastructure Framework and send it to his desk, and pass a budget resolution and legislation that makes his full Build Back Better vision a

(Continued on page 29)

(Continued from page 28)

reality.

- Improve healthy, sustainable transportation options for millions of Americans by modernizing and expanding transit and rail networks across the country, while reducing greenhouse gas emissions. The Plan is the largest federal investment in public transit in history and is the largest federal investment in passenger rail since the creation of Amtrak.
- Repair and rebuild our roads and bridges with a focus on climate change mitigation, resilience, equity, and safety for all users, including cyclists and pedestrians. The Bipartisan Infrastructure Framework is the single largest dedicated bridge investment since the construction of the interstate highway system.
- Build a national network of electric vehicle (EV) chargers along highways and in rural and disadvantaged communities. The largest investment in EV infrastructure in history, the Bipartisan Infrastructure Framework will accomplish the President's goal of building 500,000 EV chargers.
- Electrify thousands of school and transit buses across the country to reduce harmful emissions and drive domestic manufacturing of zero emission vehicles and components.
- Eliminate the nation's lead service lines and pipes, delivering clean drinking water to up to ten million American families and more than 400,000 schools and child care facilities that currently don't have it, including in Tribal nations and disadvantaged communities. The Plan is the largest investment in clean drinking water and waste water infrastructure in American history.
- Connect every American to reliable high-speed internet, just as the federal government made a historic effort to provide electricity to every American nearly one hundred years ago. The Framework will also drive down prices for internet service and close the digital divide.
- Upgrade our power infrastructure, including by building thousands of miles of new, resilient transmission lines to facilitate the expansion of renewable energy, including

through a new Grid Authority. The Plan is the single largest investment in clean energy transmission in American history.

- Create a first of its kind Infrastructure Financing Authority that will leverage billions of dollars into clean transportation and clean energy.
- Make the largest investment in addressing legacy pollution in American history, a cleanup effort that will create good-paying union jobs and advance environmental justice.
- Prepare more of our infrastructure for the impacts of climate change, cyber attacks, and extreme weather events. The Framework is the largest investment in the resilience of physical and natural systems in American history.

The Framework, which will generate significant economic benefits and returns, is financed through a combination of closing the tax gap, redirecting unspent emergency relief funds, targeted corporate user fees, and the macroeconomic impact of infrastructure investment.

Bipartisan Infrastructure Framework Amount (billions)

Total	\$579
Transportation	\$312
Roads, bridges, major projects	\$109
Safety	\$11
Public transit	\$49
Passenger and Freight Rail	\$66
EV infrastructure	\$7.5
Electric buses / transit	\$7.5
Reconnecting communities	\$1
Airports	\$25
Ports & Waterways	\$16
Infrastructure Financing	\$20
Other Infrastructure	\$266
Water infrastructure	\$55
Broadband infrastructure	\$65
Environmental remediation	\$21
Power infrastructure incl. grid authority	\$73
Western Water Storage	\$5
Resilience	\$47

*New spending + baseline (over 5 years) = \$973B

*New spending + baseline (over 8 years) = \$1,209B

(Continued on page 30)

(Continued from page 29)

Proposed Financing Sources for New Investment

- Reduce the IRS tax gap
- Unemployment insurance program integrity
- Redirect unused unemployment insurance relief funds
- Repurpose unused relief funds from 2020 emergency relief legislation
- State and local investment in broadband infrastructure
- Allow states to sell or purchase unused toll credits for infrastructure
- Extend expiring customs user fees
- Reinstate Superfund fees for chemicals
- 5G spectrum auction proceeds
- Extend mandatory sequester
- Strategic petroleum reserve sale
- Public-private partnerships, private activity bonds, direct pay bonds and asset recycling for infrastructure investment
- Macroeconomic impact of infrastructure investment

Comment: The White House publicly endorsed the infrastructure proposal that a group of 21 Senators on both sides of the aisle had crafted. The \$1.2 trillion measure includes \$109 billion for roads, bridges, and major projects, and another \$16 billion for ports and waterways. There is no legislative text available at this point, but announcement of the deal provided much-needed momentum for Congressional action on meaningful infrastructure investments. House and Senate leadership and the White House anticipate that this proposal will move concomitantly with a budget reconciliation bill that will carry a number of provisions from President Biden's American Jobs Plan and the American Families Plan. How this strategy will affect prospects for the deal announced remains unclear.



Timber Talk

*Your Voice for South Carolina
Timber Harvesting*

Contact Crad Jaynes at
1-800-371-2240 or bcjpaw@windstream.net

TIMBER HAULING PLATFORM LAUNCHES

The South Carolina Timber Producers Association (SCTPA), Carolina Loggers Association (CLA) and Virginia Loggers Association (VLA) have come together to launch a **New Platform** in Partnership with the U.S. Endowment for Forestry and Rural Communities to help loggers save money.

We know the costs for loggers aren't going down, be it insurance, fuel, supplies, equipment, tires, etc. But saving money can help to reduce the costs of operations.

Loggers, owner-operators, independent timber haulers and timber industry professionals looking to save money will benefit from our new program called Timber Hauling.

The new platform launched May 3rd for logging professionals featuring discounts from top name vendors. Additional vendors will be added periodically. Discounts can be found for:

- Tires
- Legal fees to defend against fraudulent accidents
- Hoses & fittings
- Oils & lubricants
- Equipment supplies
- And we're adding fuel discounts – up to \$.42 off each gallon of diesel fuel
- More discount programs will be available

Timber Hauling is an online approach to helping loggers in South Carolina, North Carolina and Virginia save money on quality products and services. Loggers who are not association members can join their respective association on the platform to begin using the discounts programs.

After almost four years in the development, the program is a reality. SCTPA, CLA and VLA are proud to have developed the program with the U.S. Endowment of Forestry and Rural Communities. The Endowment graciously paid for the pro-

gram's development through the partnership of the three associations and The Endowment.

As an online platform, you can sign up and start saving on purchases from the participating vendors. Just go to www.timberhauling.com and see the site, sign up and begin using the available services and products for association members. SCTPA sends the platform the SCTPA member list. If you need your SCTPA member number and active membership period, contact SCTPA.

SCTPA, CLA, VLA and The Endowment are proud to make this platform available to assist loggers in saving money.

Contacts:

- Crad Jaynes, SC Timber Producers Association, 803-530-5874, bcjpaw@windstream.net
- Ewell Smith, Carolina Loggers Association, 504-884-4585, esmith@ncloggers.com
- Ron Jenkins, Virginia Loggers Association, 804-677-4290, info@valoggers.org



TOP SENATORS PRESS BIDEN TO DO MORE ON FOREST MANAGEMENT TO COUNTER WILDFIRES

By Abby Smith, Energy and Environment Reporter,
Washington Examiner, June 15, 2021

Senators Joe Manchin and John Barrasso, the top Democrat and Republican on the Senate Energy Committee, are calling on President Joe Biden to expand forest management ahead of what is expected to be another severe wildfire season.

Biden's proposal in his fiscal year 2022 budget for "robust funding" for forest thinning and reforestation, two tactics to help prevent and reduce the severity of wildfires, isn't enough to address the gap in forest management, the West Virginia Democrat and the Wyoming Republican wrote in a letter made public Tuesday.

IT ISN'T ONLY CLIMATE CHANGE MAKING THE WESTERN WILDFIRES WORSE

"We need to increase the pace, scope, and scale of this work, not incrementally, but by orders of magnitude," the senators wrote to Biden. "Moreover, our federal land management agencies need new direction and resources to undertake innovative approaches and bring new technologies to our forest management paradigm and our forest products sector."

The senators are calling on Biden to direct the Agriculture and Interior departments to issue a public report outlining how the agencies can improve their efforts and what challenges they face.

Former President Donald Trump claimed states in the West such as California were suffering from more extreme wildfires because their governments weren't properly managing their forests, and he dismissed claims that climate change was also playing a role in making the fires more intense.

Experts say, however, that both climate change and poor forest management have compounded to spark the intense blazes much of the West experienced last year and could see again this year.

Manchin and Barrasso point to a massive gap between the federal government's work to manage forests through thinning of trees, prescribed burning, or reforestation and what is needed to prevent severe wildfires.

As an example, the senators say the U.S. Forest Service has conducted commercial thinning on only 0.2% of the 63 million acres considered to be at high risk for severe wildfires. The Forest Service is also falling short on reforestation, currently only planning to reforest one-third of the 4 million acres it says need tree planting, the senators say.

The senators also say a lack of adequate forest management is a climate change threat. Wildfires themselves emit carbon dioxide, with the deadly fires in California last year spewing out 25% more emissions than the state's fossil fuel industry. And as wildfires destroy forests, those regions become sources of emissions, rather than carbon sinks, the senators write.

"We can prevent further carbon emissions and increase carbon absorption if we proactively manage for healthy and resilient forests, especially through significantly increasing the use of practices such as reforestation, hazardous fuels reduction, thinning treatments, and prescribed fire," they said.



Timber Talk
*Your Voice for South Carolina
Timber Harvesting*



Team Safe Trucking Driver Safety Training Programs

South Carolina Timber Producers Association is providing your company with **Team Safe Trucking Driver Refresher Training Program**. TST training courses are the most convenient and user-friendly truck driver safety training courses available. They focus specifically on transportation of forest products. Trainees can access TST training courses at any time using a smart device or computer with internet access. A detailed record of completed courses, the training material used for training, the date and time the training was completed, and a training certificate is available for each course completed through the online training management platform. This information can be made available to business owners, insurance companies and logger associations. The convenience of “on-demand” driver safety training will save time and money, allowing more time for productivity while complying with governmental and insurance carrier mandates. These courses can be accessed free of charge. This unique training platform is designed with input from forest products truck drivers, owners, and other experts across the nation.

Team Safe Trucking Driver Safety Training Modules Outline (additional modules available covering various subjects)



The South Carolina Timber Producers Association Educational Sponsor Website

southcarolinatimberassociation-teamsafe.talentlms.com - (31 courses) Driver Refresher Training Program Courses

Group Key: SCTP Association

Create a free account for yourself and all your drivers and start your fleet safety training program today!

At the Mill

Entering & Exiting (ENTREXT)
Fall Prevention (Fall Prevention)
Loading and Unloading (LOADING)
Mill General Safety (Mill General Safety)
Mill Qualification Packets (Mill Qualification)
Mill Safety Challenges (MILLSAFETY)
Multi-contractor & Liability (Multi contractors)
Wood Roads (Wood Roads)

Before You Drive

Accountability (accountability)
Alcohol & Drugs Part 1 (ALCDP1)
Alcohol & Drugs Part 2 (Alcohol & Drugs 2)
Alcohol and Drugs Part 3 (Alcohol & Drugs 3)
Driver Selection (Driver Selection)
Driver Training (DRVTRAIN)
Fatigue (Fatigue)
Fleet Safety Programs (FLTPECKR)
HOW TO SURVIVE A D.O.T. AUDIT (Maintenance)
Medical Clearance (MEDCLAR)

On the Road

Backing (backing)
Breakdowns (BREAK)
Coupling & Uncoupling (Coupling)
DOT Inspections (DOT Inspection)
Following Distance (following distance)
Passing & Being Passed (Passing)
Railroad Crossings (Railroad Crossings)
Right of Way (rights)
Stopping & Parking (stopping & Parking)
Turns & Curves (turns)
Adverse Conditions

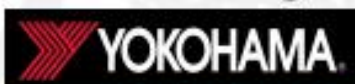
S C Timber Producers Association
Crad Jaynes
President & CEO
SCTPA
P.O. Box 811, Lexington, SC 29071
601 Carola Ln, Lexington, SC 29072
Phone: (803) 957-9919
<https://scloggers.com/>
bcjpaw@windstream.net



\$100 NEVER TOOK YOU SO FAR.

...BREAKING NEWS...

After months of hard work, we have launched our new website. Members will now have access to their SLC invoices 24/7 with a member login! Amongst the new features are the "find the nearest station" to my location feature, an approved national tires and parts dealers with location info, fill out an application on-line and other features that will assist in the improved communication with our members. The SLC's founding "Cost-Cutting Mission" continues!



AN INDEPENDENT FORESTRY & AGRICULTURAL COOPERATIVE

www.SouthernLoggers.com



29 FUELING STATIONS

Brewton, AL
Claiborne, AL
Cottonton, AL
LaFayette, AL
Moundville, AL
Pennington, AL
Pine Hill, AL
Selma, AL
Campti, LA
Carmel, LA
Chopin, LA
DeRidder, LA
Hodge, LA
Mansfield, LA
Pineville, LA
Port Hudson, LA
Winnfield, LA
Zwolle, LA
Monticello, MS
Redwood, MS
Chillicothe, OH
Allendale, SC
Georgetown, SC
Orangeburg, SC
Domino, TX
Evadale, TX
Lufkin, TX
Pineland, TX
Covington, VA

Please contact our
endorsed SC Timber
Producers Association
broker - Mark Snelson
(843)325-1211
msnelson@sc.rr.com

Our Mission | To revolutionize what EMPLOYER GROUPS expect from their Agency.

A Revolutionary New Experience

We feel that groups in today's complex and constantly changing environment need more than simply proposals and service. We understand that you are expected to sometimes be a lawyer, accountant and human resources department all at once, and we've expanded our portfolio of services to include things to help you wear all those hats.

Here are some of the cool things we are doing very, very well.

Online Benefit Enrollment Tool

Enroll and manage your entire employee benefits package online — no more paper forms!

Customized Benefit Booklets

We create a customized professional benefit booklets for you. They run the full gamut of all the benefits that your group offers their employees.

ERISA WRAP Documents

That's right, we will complete the ERISA WRAP Documents, and have the full Summary Plan Descriptions (SPDs) including mandated ERISA language ready for your group to distribute to employees

Full Online HR Library

Easily share our HR Library with your employer groups and can assist them with such areas as OSHA, ERISA, COBRA, Immigration, Taxation and more.



Quoting Tool

Send us a small group census and we'll send you quotes back from every fully insured carrier available in your market in one concise, easy to read spreadsheet.

1094 Completion and Distribution

We take the burden off the HR administrators by providing all forms ready to distribute to the employees of your insured groups, as well as signature ready employer tax forms. All your customers have to do is distribute them to their employees, sign the corporate form and mail to Uncle Sam.

ACA Compliance

Our software tracks and maintains your plan to make sure that you are hitting the required governmental benchmarks.

Our Carriers



ATTENTION SC Timber Producers Association Members!! Our exclusive broker, **Mark Snelson** is here to help you with all of your Medicare needs. Please contact him at:

(843)325-1211 or msnelson@sc.rr.com

Medicare Supplement Plans from BlueCross BlueShield of South Carolina



Medicare alone won't pay for all your expenses. We can help you fill the gap! Call **Mark Snelson** at **(843)325-1211**. Mark is an authorized agent for BlueCross BlueShield of South Carolina, an independent licensee of the Blue Cross and Blue Shield Association.

NEW SCTPA MEMBER BENEFIT & SERVICE



**Contact Steve Wilt (843) 566-5463
or Jalisa Byas (803) 381-2198 to Get
Your Savings.**

NEW Michelin & B. F. Goodrich Tire Discount Program

SC Timber Producers Association is proud to announce a New Member Benefit Program. SCTPA has partnered with Michelin and B. F. Goodrich (BFG) to offer ACTIVE dues paid members the opportunity to save money on tires through this program.

SCTPA President Crad Jaynes said, "SCTPA is pleased and proud to partner with Michelin North America to offer this valuable and cost saving opportunity for our members. Our members are always our first priority and when our association can provide a cost saving program like this, it is a "win" for everyone. I appreciate Michelin partnering with us in this program."

This program is available to ALL active dues paid members in all SCTPA member categories. Program is effective as June 1, 2019. Members are able to visit any local Michelin dealer. Program requires an application be completed and the use of a credit or debit card.

Member Process for SCTPA Michelin & BFG Tire Program

- 1) Contact SCTPA to receive active member number, membership period and member status (logger, wood dealer, etc.).
- 2) Must be an Active Dues Paid SCTPA Member.
- 3) Interested SCTPA members should reach out to your local Michelin Tire Dealer.
- 4) Complete the application and forward it to Jalisa Byas (Jalisa.byas@michelin.com) or Steve Wilt (Steve.wilt@michelin.com) Jalisa is the SC Representative and Steve is the Territory Manager. Application available from SCTPA. Write your SCTPA member number and member period on the application at the top left under Michelin logo. *Example: SCTPA ##### / 01-01-19/20*. Sign and send both the Application and Conditions of Sale pages.
- 5) Either Jalisa and/or Steve will verify active membership with SCTPA's Crad Jaynes.
- 6) Once application is verified, it will be sent to Michelin for approval.
- 7) Michelin will provide the customer with a Bill To and Ship To Number. At that time, the member will have to Register their account at **Michelinb2b.com** and upload the member's Credit or Debit Card.
- 8) Program available to ALL members registered as active dues paid SCTPA members.
- 9) Program available for Michelin and B.F. Goodrich tires. Tires available are Truck, Light Truck, Passenger Car & Agricultural, Industrial & Off Road Tires & Retreads.
- 10) Once a member is registered on **Michelinb2b.com**, member will have access to all their purchase reports and tire pricing.
- 11) Members can go to any Michelin dealer to purchase tires.
- 12) Tires cannot be ordered online or shipped to the customer. Must go through a Michelin dealer.

SCTPA is pleased to offer our members this tire discount program on the high quality tire products offered by Michelin Tire and B. F. Goodrich Tire. Should a member have any questions, feel free to contact SCTPA.



DIAGNOSED — AND EVEN REPAIRED — FROM AFAR.

WITH JOHN DEERE CONNECTED SUPPORT™, your machines are constantly monitored by John Deere and your local dealership to help reduce, or even prevent, costly downtime. Cutting-edge technology, such as remote diagnostics and programming, lets technicians perform work like they're in the woods — even when they're not. All so you can get back to work fast, and **OUTRUN™**.

OUTRUN™

Adairsville, GA • 770-773-9857 | Albany, GA • 229-888-1212 | Andrews, SC • 843-221-4940 | Atlanta, GA • 404-691-9445 | Aynor, SC • 843-358-5688
Braselton, GA • 770-965-1889 | Brunswick, GA • 912-264-6161 | Columbus, GA • 706-687-3344 | Cuthbert, GA • 229-732-2631 | Dothan, AL • 334-794-8691
Grovetown, GA • 706-855-5440 | Ladson, SC • 843-572-0400 | Macon, GA • 478-788-1586 | Savannah, GA • 912-964-7370 | Simpsonville, SC • 864-963-5835
Troy, AL • 334-566-4181 | Valdosta, GA • 229-474-6680 | Walterboro, SC • 843-539-1420 | West Columbia, SC • 803-794-9340

U.S. Endowment Launches Timberhauling.com Platform

U.S. Endowment for Forestry and Communities in May announced the official launch of TimberHauling.com, a national buyers' group that provides savings on products and services to nearly 10,000 independent small trucking and hauling businesses.

The TimberHauling.com platform will help the sector move together as a unified market rather than thousands of independent producers. The timber harvest and hauling sector of the forestry industry is the strained link in the U.S.-based forest products value chain. This sector is continually dealing with a range of challenges, including inclement weather, mill quotas, labor shortages, high fuel and insurance costs, and high equipment costs—both upfront and ongoing. For a modest annual membership fee, members enjoy discounts and savings on parts and services.

"The Endowment focuses on opportunities when others can't or won't," according to Ewell Smith, Executive Director of the Carolina Loggers Assn. (CLA). "Developing a national platform that will save money for independent loggers and haulers will make them more cost-competitive and efficient."

This group also strengthens the capacity of state and regional associations to deliver services. The program is being piloted first in partnership with state logging associations in North Carolina (CLA), South Carolina (South Carolina Timber Producers Assn.), and Virginia (Virginia Loggers Assn.).

"The Endowment is using our sector-wide vision, risk capital, and bridge-building competencies to build an 'Amazon-like' model to drive savings to individual timber hauling firms," says Pete Madden, President & CEO of the Endowment. "TimberHauling.com is part of our Initiative 2020 Vision that mandates strategic and targeted investments to support the development of traditional forest products markets to retain and grow existing forest-based economies."

A variety of companies have already joined the platform: Goodyear Tire & Rubber Company; MHC Kenworth; Setliff Law P.C.; Schwab Brothers Hydraulics; TCS Fuel Cards; North American Supply; and Cadence Petroleum Group. More companies and services are expected to be added as TimberHauling.com grows.

Currently, the site is offering a free six-month "test drive" membership that can offer cost savings on hoses, tires, equipment, legal expenses, oil and fuel.



U. S. Senate Moves China Competitiveness Bill

Forest Resources Association Issue Update
June 25, 2021

In a rare show of bipartisanship, the U.S. Senate earlier this month passed a sweeping measure (S. 1260) aimed at improving our nation's technological competitiveness with China. Among the legislation's many provisions, several are of interest to wood machinery manufacturers.



Originally introduced as the Endless Frontier Act, it morphed into an amalgam of a few bills that were pending in the Senate and became the U.S. Innovation and Competition Act, or USICA. One section of the bill addresses regional technology hubs by creating a regional technology hub program at the U.S. Department of Commerce to support regional economic development and innovation. The bill envisions these technology hubs carrying out workforce development initiatives, business and entrepreneur development activities, technology maturation efforts, and infrastructure investments related to the technology development. The technology hubs program would be authorized at \$10 billion over fiscal years 2022 to 2026.

USICA would also authorize close to a quadrupling of funding for the Department of Commerce's Manufacturing Extension Partnership (MEP) and create a new track within the program for public benefit activities like workforce development and cybersecurity services. The MEP would be funded at \$2.4 billion over fiscal years 2022 to 2026. It also increases funding for the Manufacturing USA program at \$1.2 billion over fiscal years 2022 to 2026. This program funds public-private technology hubs that manufacturers participate in throughout the country.

To shore up the supply chain weaknesses exposed during the pandemic, USICA would establish a supply chain resiliency program at the Department of Commerce to work with the private sector to identify and recommend opportunities to mitigate or address supply chain vulnerabilities in the United States and in allied and partner countries.

USICA would also codify in law different provisions

that were initially enacted under President Biden's Buy American Executive Order from February 2021. These include the "Made in America" office, which is officially tasked with enforcing compliance with domestic preference laws such as the Buy American Act of 1933. There is also a new Buy American requirement that infrastructure projects are eligible for federal financial assistance only if all the "iron, steel, manufactured products and construction materials" used in those projects are produced in the United States. USICA also restricts the use of Buy American waivers, which allow federal agencies to be exempted from Buy American requirements and procure foreign-made goods.

One other provision to note deals with trade. The legislation reauthorizes the Miscellaneous Tariff Bill (MTB) process, which allows U.S. companies that have exhausted domestic sourcing options and have no other alternative but to source equipment or inputs from overseas to be exempt from import duties. The MTB process lapsed at the end of last year and resulted in punitive tariffs for many companies that rely on foreign sourced inputs to keep their operations running. The MTB language in this bill applies relief retroactively for 120 days and extends the MTB process for two additional cycles in 2022 and 2025. In addition, the Generalized System of Preferences or GSP was also reauthorized. GSP reduces or eliminates duties and tariffs for certain imports from low-income countries. Like MTB, U.S. importers lost relief from tariffs and had to resume paying duties and tariffs when GSP expired at the end of 2020. Under this bill, importers of GSP products are retroactively refunded for these amounts paid and no longer have to pay duties and tariffs on GSP imports until January 1, 2027, when it will expire again. On a final note regarding trade with China, all exemptions and exclusions to Section 301 China tariffs are reinstated through the end of 2022.

Senate passage of USICA was a positive development, particularly in light of the fact that it was approved resoundingly on a 68-32 vote. There are related bills pending in the House that have not yet been considered in committee. It is unclear at this point whether House leadership will fashion its own China competitiveness package and at some point reconcile it with the Senate version, or simply take up the Senate-passed USICA.

REP. BOEBERT INTRODUCES COMPREHENSIVE BILL TO PREVENT CATASTROPHIC WILDFIRES

July 1, 2021
Press Release

U.S. Rep. Lauren Boebert led 16 of her colleagues in introducing the Active Forest Management, Wildfire Prevention and Community Protection Act, to improve the health of our nation's forests, remove bark beetle-killed trees, protect property, stop frivolous litigation, and prevent catastrophic wildfires.

Rep. Lauren Boebert stated: "44 large wildfires are currently burning more than 660,000 acres because of decades of poor forest management, radical environmental lawsuits, federal bureaucracy, and an emphasis on funding for suppression as opposed to active management. I introduced the strongest forestry bill in decades, and my Active Forest Management, Wildfire Prevention and Community Protection Act will fully fund the removal of trees killed by bark beetles, reform costly litigation processes used by radical enviros to halt responsible forest thinning, and assist rural communities by ensuring 25% of the revenues from logging in National Forests stay on the ground in counties that actively maintain their forests. This bill is fully paid for and will bring in billions for the U.S. Treasury. Instead of pandering to radical enviros, my bill puts rural communities first."

Chairman of the Western Caucus Dan Newhouse said, "I am deeply concerned about the increasing frequency and severity of wildfires in the Pacific Northwest and across the rural West. As Chairman of the Congressional Western Caucus, I am committed to addressing this issue and am proud to stand with Rep. Boebert in support of this common-sense legislation. Allowing for active forest management will help prevent catastrophic wildfires, protect our local communities, and improve the health of our nation's forests."

Representative John Carter stated: "Unfortunately, the country has witnessed the insurmountable devastation caused by wildfires across the nation, but with a more proactive approach, we can greatly reduce these catastrophes. I'm proud to join Representative Boebert on the Active Forest Management, Wildfire Prevention and Community Protection Act to implement targeted forestry management techniques that will improve the health of our forests and protect communities against destructive wildfires."

Congressman Pete Sessions said, "As an Eagle Scout, I understand the importance of conserving the



outdoors. We have seen the catastrophic damage caused by wildfires, particularly in California and Colorado. This bill will provide safety and stability to communities and increase the health of our nation's forests."

Representative Matt Rosendale stated: "Year after year wildfires ravage the west in large part due to a lack of proper forest management on federal lands. I am proud to be an original cosponsor of the Wildfire Prevention and Community Protection Act, which will be transformative in promoting active forest management and mitigating the risk of catastrophic wildfires. This commonsense bill is fully paid for and is a win-win for the taxpayers of Montana, and the nation."

Representative Tom Cole stated: "Over the past several years, wildfires have devastated communities nationwide. Not only do these destructive fires cause untold damage to the environment, they claim hundreds of lives. In response to this situation, I am proud to co-sponsor the Active Forest Management, Wildfire Prevention and Community Protection Act. This legislation offers commonsense solutions for preventing wildfires as well as reducing lumber prices by rehabilitating the health of our forests."

Congressman Tom Tiffany said, "The forest products industry is a key economic driver in Wisconsin's 7th District. This bill provides proactive solutions to many of the challenges our nation's forests face and will allow for active forest management to restore forest health and reduce the threat of catastrophic wildfires."

American Loggers Council Executive Director Scott Dane said, "The American Loggers Council strongly supports Congresswoman Boebert's Forestry Bill. This bill takes a comprehensive approach to addressing and mitigating the factors impeding healthy forest

(Continued on page 41)

(Continued from page 40)

management and wildfire suppression. I recently participated in a six-hour helicopter survey of the aftermath of the million acres of wildfire destruction in California. From that vantage point the magnitude and scope was beyond description. Adding to the impression was the urgent private land timber salvage operations in contrast to minimal public land salvage and reforestation efforts. Unfortunately, with the current conditions the west is poised to experience a repeat of the previous years. It is time to take an all of the above approach to improving the health of our forests and reducing the negative environmental consequences, property losses and fatalities created by severe wildfires."

Louisiana Forestry Association Executive Director C.A. "Buck" Vandersteen said, "The Louisiana Forestry Association commends Representative Boebert and her colleagues for addressing opportunities to actively manage forests, prevent insect and disease, reduce the threat of wildfire and produce an income stream to accomplish the task. It is past time to act but with Representative Boebert and her colleagues' vision and perseverance, the nation can begin to accomplish great things for its forests."

Background:

In 2020, the U.S. set a new record as 57,000 wildfires caused 10.3 million acres to go up in flames. Rep. Boebert's district has already experienced five large wildfires this year, and nationally, there are currently 44 large active wildfires.

The bark beetle epidemic has infected all 8 of the national forests in the Rocky Mountain Region and has destroyed 45 million acres of forest including 15 million acres of Forest Service land. Bark beetles kill trees and turn them into fuel for wildfires—creating dangerous conditions throughout the West. Rep. Boebert's Active Forest Management, Wildfire Prevention and Community Protection Act creates the Western Bark Beetle Epidemic Fund to remove dead beetle trees and reduce the risk of wildfire. This fund is fully paid for by the increases in receipts that will result from increased timber harvests authorized by the bill.

To prevent wildfires and protect critical infrastructure, Rep. Boebert's bill authorizes the removal of hazard trees within 500 feet of electric power lines. This removes unnecessary bureaucracy and is a commonsense reform that will protect critical infrastructure and grid reliability for rural communities.

Rep. Boebert's bill puts communities first by desig-

nating counties containing National Forest Service land as Forest Revenue Areas. Counties in Forest Revenue Areas will receive 25% of the revenue generated from timber harvests. Additionally, Rep. Boebert's bill includes provisions that guarantee that PILT payments and Secure Rural Schools payments are not negatively impacted by the additional Forest Revenue Area payments. These additional revenues will allow rural communities to fund law enforcement, search and rescue operations, infrastructure, schools, and other essential services.

Rep. Boebert's bill also includes litigation reforms that will prevent frivolous litigation and prevent environmental extremists from blocking hazardous fuels reduction and active management projects. These projects will boost rural economies and make our forests healthier and more sustainable for years to come.

Supporters of Rep. Boebert's bill include: American Loggers Council, American Walnut Manufacturers Association, Arizona Farm Bureau, Arizona Power Authority, Arizona Rock Products Association, Associated Governments of Northwest Colorado, Associated Oregon Loggers, Inc., Colorado Off Highway Vehicle Coalition, Colorado Snowmobile Alliance, enCore Energy, Grant County Cattle Growers' Association (NM), Idaho Recreation Council, Jackson County Commissioners (CO), Less Government, Louisiana Forestry Association, Missouri Forest Products Association, Moffat County Commissioners (CO), Mountain States Lumber Dealers Association, National Lumber & Building Material Dealers Association, New Mexico Federal Lands Council, One Voice for Off-Road Motorized Recreation, Protect Americans Now, Rio Blanco County Commissioners (CO), **South Carolina Timber Producers Association**, Sulphur Springs Valley Electric Cooperative, Inc., Sustainable Forest Action Coalition, Trails Preservation Alliance (CO), United Four Wheel Drive Associations, United Snowmobile Alliance, Elko County Commissioner and President of the Nevada Lands Council Rex Steninger, Delta County Commissioner Wendell Koontz, Garfield County Commissioner John Martin, and Montrose County Commissioner Sue Hansen.

16 Members of Congress joined Rep. Boebert in introducing the bill, including Reps. Ken Buck, Kat Cammack, John R. Carter, Tom Cole, Pat Fallon, Paul Gosar, Clay Higgins, Doug LaMalfa, Doug Lamborn, Tom McClintock, Barry Moore, Dan Newhouse, Jay Obernolte, Matt Rosendale, Pete Sessions and Tom Tiffany.

SCTPA Attends SC U.S. Senator Tim Scott Event

A fundraiser event was held in Edgefield at the Palmetto Shooting Complex on June 29 and SCTPA's President Crad Jaynes attended the afternoon clay shoot, didn't shoot as there was no need to waste ammo and clays, and evening meal. A large crowd of some 100 supporters and shooters gathered to meet and greet Senator Scott.



There were many sponsors and SCTPA member Log Creek Timber Company was a major sponsor and organizer for the event. SCTPA's Vice-Chairman Josh Key, Beech Island Timber and Construction, Inc. along with Swamp Fox Agency, LLC's Rick Quagliaroli and Jeremy Barclay were in attendance.

Senator Scott participated in the clay shooting by riding around and having a photo taken with the different shooting teams. Later he addressed the crowd and talked about current issues facing the U.S. Senate and U.S. House of Representatives and our nation. He talked about his upbringing and introduced his Mom who was present for the event. He discussed the challenges facing our nation during these somewhat difficult times. He has a clear cut view on what needs to take place to improve our state and nation for the future.

SCTPA had the opportunity to talk with Senator Scott and thank him for his support of the Logger and Log Hauler Relief Program and for being a co-sponsor in the Senate of the Future Logging Careers Act. Senator Scott was one of our SC U.S. representatives who wrote a support letter to U.S. Department of Agriculture Secretary Tim Vilsack supporting the Logger and Log Hauler Relief Program and requesting Secretary Vilsack to get the program released very soon. This was not the first opportunity to talk with Senator Scott as SCTPA has visited with him on several visits to Washington, DC.

The event was successful as over \$120,000 was raised for his campaign. Senator Scott is a down to earth gentleman with his heart in SC and his approaches to improve our state and nation. Thanks Senator Scott for your service to the Palmetto State and Our Nation.



(l-r) Josh Key, Crad Jaynes, Jeremy Truluck, Sen. Scott, Tim Williams, Jeremy Barclay, Rick Quagliaroli, Martha Sanders, Reg Williams



Sen. Scott & Log Creek Timber Co. folks



(l-r) Jeremy Barclay, Josh Key, & Rick Quagliaroli





Mark Your Calendar

July 2021

30 – 31 American loggers Council Summer Board of Directors Meeting, Minneapolis, MN

August 2021

26 SCTPA Board of Directors Meeting, 10 a.m., Columbia, Meeting Location Not Determined

September 2021

28 Timber Operations Professional (TOP) 1-Day Initial Training Class, Saluda Shoals Park Conference Center, 8 a.m. Columbia

No District meetings are scheduled due to the ongoing Coronavirus situation.

SCTPA is available to those that need to view the 2021 SFI Timber Operations Professional (TOP) Update video to continue to be SC SFI Trained. June 30, 2021 was the deadline for viewing the 2021 TOP Update. A limited extension is available for those who did not meet the June 30th deadline. Contact SCTPA and a group live class or individual class can be arranged.

District Meeting dates are subject to change. Meeting notices will be mailed prior to scheduled meeting. Meeting dates will be posted on SCTPA website ... www.scloggers.com & SCTPA Facebook Page
Members & Non-Members are encouraged to attend our district meetings to know what the issues are affecting the industry.

Need SFI Trained DVD Class or other training?

SCTPA can provide the New DVD Training Module for SFI Trained status. SCTPA is an approved DVD training class facilitator and will be scheduling classes during the year. Other training programs are available for safety, driver training, equipment lockout & tagout, hazardous materials spill control on logging sites and forestry aesthetics. Truck Driver Training Workshops will be scheduled. Watch the Mark Your Calendar section of this newsletter for dates. Notices for SCTPA workshops & events will be forwarded.

SCTPA Board of Directors

Chairman: Joseph "BoBo" Seckinger
Seckinger Forest Products, Inc.
Hampton
Cell 803-571-0019

Vice Chairman: Josh Key
Beech Island Timber & Construction, Inc.
Jackson
Cell 803-507-8995

Secretary-Treasurer: Robby Crowder
Land & Timber, LLC
Greenwood
Cell 864-941-6052

Danny McKittrick
McKittrick Timber, LLC
Heath Springs
Cell 803-320-1739

Rickey Chapman
Chapman Timber Inc.
Newberry
Cell 803-924-0082

Billy Walker
Walker & Walker Logging, LLC.
Laurens
Cell 864-923-0385

Donnie Lambert
Leo Lambert Logging, Inc.
Georgetown
Cell 843-340-8408

Tommy Barnes
Ideal Logging, Inc.
Edgemoor
Cell 803-385-7994

Carey "Buster" Harrison
Harrison Forest Products, Inc..
Round O
Cell 843-908-0085

Bob Lussier
Great Woods Companies, LLC
Bennettsville
Cell 860-377-5318

John Rice
Rice Land & Timber, LLC
Allendale
Cell 803-259-6202

Crad Jaynes
President & CEO
SCTPA

PO Box 811, Lexington, SC 29071
800-371-2240 Fax: 803-957-8990
bcjpaw@windstream.net



PO Box 811
Lexington, SC 29071
800-371-2240
803-957-8990
bcjpaw@windstream.net

*The **only** insurance agency
endorsed by and supporting
your Association.*

*The South Carolina Timber
Producers Association*

Representing the leading logging insurance carriers
including the only logger owned carrier Forestry Insurance
Company of the South East

Commercial Auto • Workers Compensation • Equipment Marine
• General Liability • Excess Liability • Property

The leader in the Fleet Management Practices

Contact: Jeremy Barclay, David Hayes, Michelle Hopkins
and Rick Quagliaroli

Swamp Fox Agency

P.O. Box 1318 • Moncks Corner, South Carolina 29461
843-761-3999 • Toll Free: 888-442-5647



*"Serving the Forestry Industry
For Over 35 Years."*



Our Mission

The **Mission** of the *South Carolina Timber Producers Association* is to serve as the voice for timber harvesting and allied timber businesses to advance the ability of its members to professionally, ethically, efficiently, safely, environmentally and profitably harvest, produce and transport timber to meet the timber supply demands of our state by providing continuing educational and training opportunities, distributing timber harvesting, hauling, manufacturing and selling information, representing our members in national and statewide legislative activities, and aggressively promoting, supporting and conducting programs of state, regional and national advocacy.